



# 2023 VISITORS GUIDE

Attractions • Events • Lodging  
Dining • History • Recreation



Play



Adventure



Explore

# Marcus Daly Motel

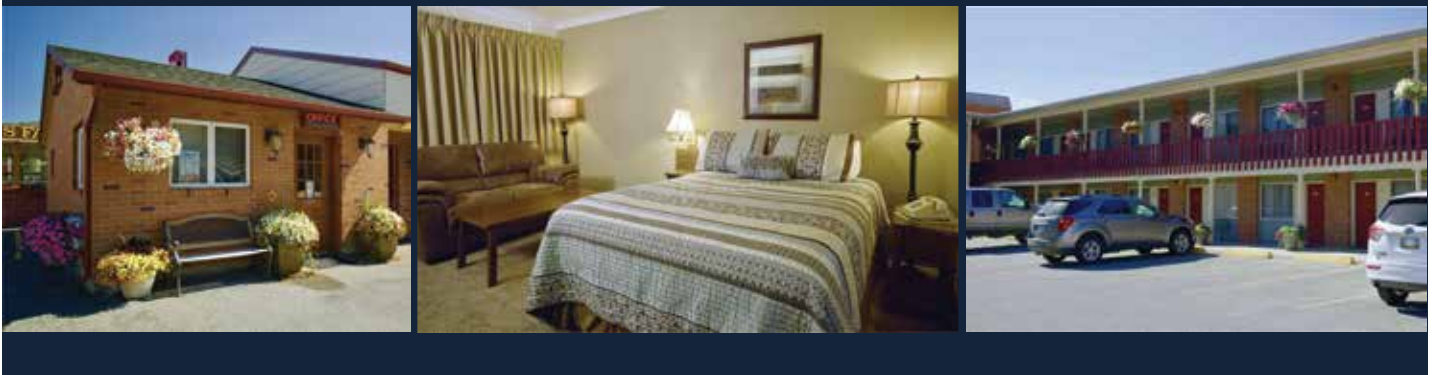
---

IN HISTORIC  
DOWNTOWN  
ANACONDA

---

Nestled in the heart of the Rocky Mountains, Anaconda delivers a unique blend of outdoor recreation, shops and restaurants, beautiful scenery, and the friendliest folks in Montana.

Explore all that Anaconda and Montana have to offer while staying at the Marcus Daly Motel!



## — GOLF AND SKI PACKAGES —

Special Rates for Business • Government • Medical • Extended Stay

**-Sorry, No Pets-**

---

119 W. Park Street Anaconda, Montana  
**(406) 563-3411 • 800-535-6528**  
www.marcusdaly.com • marcusdalymotel@gmail.com



## Meet Our Cover Photo Photographer... Carly Moodry

My interest in photography began when I was very young, but it wasn't until getting a nice camera two years ago that I became passionate about it. Taking pictures of the wildlife here in Montana is something I love to do and has become a big part of my life. Photographing an eagle flying, a moose with her calf, or a rare bird migrating through this area gives me a feeling of excitement and motivates me to get up in the morning and go out again. I know photography is definitely something I want to continue to pursue.

*Background photo & deer by Carly Moodry  
Bicycle picture by Matt Johnson of Anaconda Bicycles*



# GIDDY UP MERCANTILE

116 Alder • Anaconda, MT 563-7571

Toys • Unique Gifts • Purses • Jewelry • Carhartt •  
Wrangler • Animal Feed & Supplies • Tons of  
Montana Gifts • Something For Everyone!

1946 **77** years SINCE 1946 DEE MOTOR COMPANY 2023  
A salute to the past

GM Chevrolet Jeep Ram CHRYSLER

# DEE MOTOR CO.

1200 E. Commercial • Anaconda  
563-5225  
www.deemotors.com

Find us on Facebook



# Anacondas Newest Hotel

- 74 rooms
- Family suites available
- Meeting facility
- Board room
- High speed internet
- Swimming Pool
- Hot tub
- State-of-the-art fitness center
- Business center
- Guest laundry
- Complimentary hot breakfast



Call Anytime  
**406-797-4100**  
[www.bestwestern.com](http://www.bestwestern.com)

**We Are A Pet Friendly Property!**

100 Union Avenue • Anaconda, MT



# INDEX OF ADVERTISERS

## ACCOMMODATIONS

Marcus Daly Motel.....	inside front cover
The Forge.....	2
7 Gables.....	32
Hickory House Inn.....	39
Fairmont Hot Springs.....	70

## ANTIQUES

Treasure Town.....	6
Black Dog Antiques.....	45

## APPAREL

Giddy Up Mercantile.....	1
--------------------------	---

## ART

Copper Village Museum/Art.....	50
--------------------------------	----

## ATTORNEYS

Knight & Dahood Law Firm.....	11
Everett Cook Law Firm.....	49
Connors Law Firm.....	78

## AUTOMOTIVE

Dee Motor.....	1
Lisac Tire.....	8
Chuck's Super Lube.....	58
A&A Technical.....	72

## BAKERY

The Firefly.....	30
------------------	----

## BREWERY

Smelter City Brewery.....	43
---------------------------	----

## BUSINESS SERVICES

Discover Anaconda.....	80
------------------------	----

## CAR SHOW

Ken Cook Car Show.....	51
------------------------	----

## CASINO

Thompson's Bar.....	13
Barclay II.....	22
7 Gables.....	32
East End Casino.....	32
Donivan's.....	40
The Haufbrau.....	41
Fairmont Hot Springs.....	70

## CHAMBER OF COMMERCE

Discover Anaconda.....	20, 80
------------------------	--------

## CIGARS

Anaconda Liquor Store.....	35
----------------------------	----

## COCKTAIL LOUNGES

Thompson's Bar.....	13
Barclay II.....	22
Old Works Golf Course.....	31
7 Gables.....	32
Donivan's.....	40
The Haufbrau.....	41
Smelter City Brewing.....	43
Fairmont Hot Springs.....	70

## COPY SHOP

The Anaconda Leader.....	16,53
--------------------------	-------

## COFFEE

Coffee Corral.....	19
--------------------	----

## CONTRACTOR

Jordan Contracting.....	17
-------------------------	----

## DENTIST

Andrew Cromwell.....	78
----------------------	----

## DISPOSAL

Anaconda Disposal Service.....	29
--------------------------------	----

## ELECTRICIANS

Ray Peterson Electric.....	54
----------------------------	----

## EVENTS

Smeltermen's Weekend.....	20
CVMAC Art in Washoe Park.....	50
CVMAC Wildlife Art Expo.....	50
Ken Cook Car Show.....	51

## FEED STORES

Giddy Up Mercantile.....	1
--------------------------	---

## FINANCIAL

Glacier Bank.....	61
-------------------	----

## FLEA MARKETS

Treasure Town.....	6
Black Dog Antiques.....	45

## FOUNDRY

Affco.....	44
------------	----

## GARBAGE

Anaconda Disposal.....	29
------------------------	----

## GIFTS

Giddy Up Mercantile.....	1
Thrifty Drug.....	71

## GOLF

Anaconda Country Club.....	back cover
Old Works Golf Course.....	31
Fairmont Hot Springs.....	70

## HARDWARE

Ace Hardware.....	5
-------------------	---

## HOSPITALS

Community Hospital & Nursing Home of Anaconda.....	inside back cover
---	-------------------

## ICE CREAM

Thrifty Ice Cream Corner.....	71
-------------------------------	----

## INSURANCE

State Farm.....	65
-----------------	----

## LIBRARY

Hearst Free Library.....	28
--------------------------	----

## LIQUOR STORE

Thompsons.....	13
Anaconda Liquor Store.....	35

## LOCAL DEVELOPMENT

Discover Anaconda.....	80
------------------------	----

## MAILING SERVICES

MotherLode Mailing.....	25
-------------------------	----

## MAPS

Anaconda.....	10
West Valley.....	42
Opportunity.....	77

## NEWSPAPER

The Anaconda Leader.....	16, 53
--------------------------	--------

## PHARMACY

Thrifty Drug.....	71
-------------------	----

## PHYSICAL THERAPY

Pintler Physical Therapy.....	61
-------------------------------	----

## POKER

Thompson's Bar.....	13
---------------------	----

## PRINTERS

The Anaconda Leader.....	16,53
--------------------------	-------

## REHABILITATION

Pintler Physical Therapy.....	61
-------------------------------	----

## RESTAURANTS/DRIVE-INS

Coffee Corral.....	19
Barclay II.....	22
Firefly.....	30
Jack's Grill at Old Works.....	31
7 Gables.....	32
Donivan's.....	40
The Haufbrau.....	41
Taco Time.....	69
Fairmont Hot Springs.....	70
Subway.....	76

## REAL ESTATE

Whitetail Properties.....	9
Montana One Real Estate.....	60

## RECREATION

Chamber of Commerce.....	20, 80
Fairmont Hot Springs.....	70
Montana Zipline.....	79
Old Works Golf Course.....	31
Anaconda Country Club.....	back cover

## RESORT

Fairmont Hot Springs.....	70
---------------------------	----

## SENIOR CITIZEN'S CENTER

Metcalf Senior Center.....	59
----------------------------	----

## STORAGE

Pinnacle Peak Storage.....	62
----------------------------	----

## THEATRE

Washoe Theatre.....	52
---------------------	----

## TIRE

Lisac Tire.....	8
A&A Technical.....	72

## TOURIST ATTRACTIONS

Treasure Town.....	6
Discover Anaconda.....	20
Old Works Golf Course.....	31
Black Dog Antiques.....	45
Copper Village Museum & Art Center.....	50
Washoe Theatre.....	52
Fairmont Hot Springs.....	70
Montana Zipline.....	79
Discover Anaconda.....	80
Anaconda Country Club.....	Back cover

## ZIPLINE

Montana Zipline Adventures.....	79
---------------------------------	----

# Welcome to Anaconda!

## Home of Old Works, a Jack Nicklaus signature golf course

Welcome to Anaconda – once a company town and now a town that enjoys company.

In 1980, after more than a century of smelting copper in Anaconda, the smelter closed. The tall stack that remains on Smelter Hill loomed above a city where uncertainty briefly reigned. At the time, locals wondered whether the city they loved would survive.

It has survived, in a large part because of a tenacity that is characteristic of Anacondans and fostered by a fierce love for this unique place.

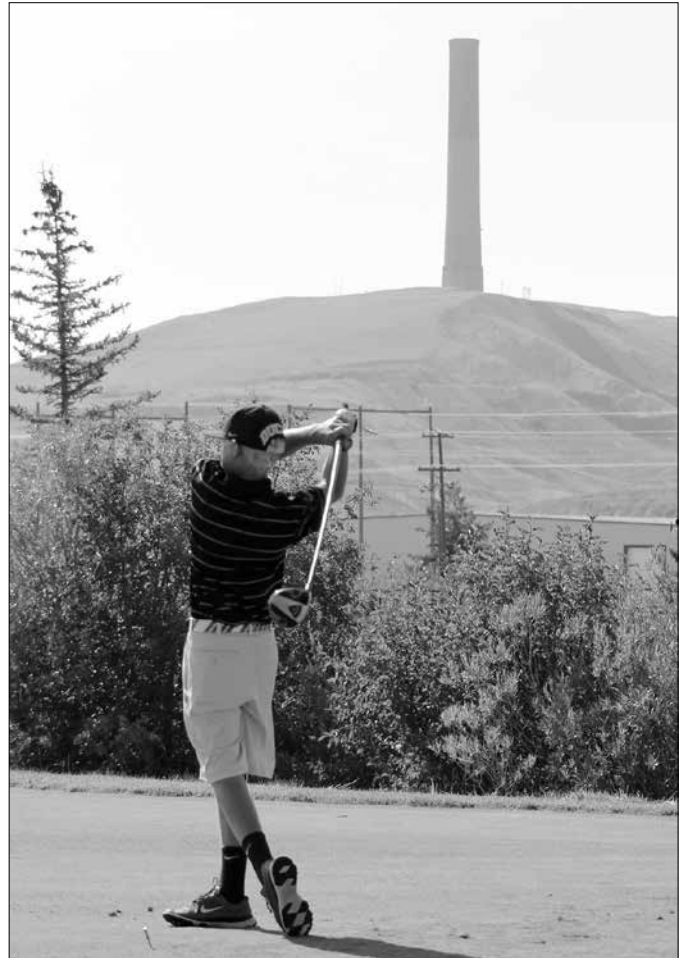
Today, residents recall Anaconda's industrial history with pride, but understand that the city's future almost certainly will rely on sharing with visitors the small-town charms locals favor and the scenic beauty and recreational opportunities that abound in this area.

This Visitor's Guide provides an overview of Deer Lodge County, which is part of the largest National Historic Landmark in the West. The National Historic Landmark incorporates Anaconda's smelter with Butte's mines and their connection by way of the old Butte, Anaconda & Pacific Railroad line.

It includes portions of Butte-Silver Bow and Anaconda-Deer Lodge counties and more than 8,000 individual properties listed on the national register of historic places. It spans over 9,000 acres including the critical railroad route linking Anaconda, also known as the Smelter City and Butte, the Mining City.

The Visitor's Guide showcases the attractions and splendors of Anaconda-Deer Lodge County – a place where industrial history bumps up against wilderness – a place where moose and bear sometimes wander into town – and a city where kids still ride their bikes to the Washoe Theatre to catch an evening show.

The majority of visitors come to Anaconda during the summer months, so they can shoot a round of golf at Old Works Golf Course – a nationally-renowned, public course designed by golf legend Jack Nicklaus as an unprecedented remedy for a Superfund site that once housed



*The Old Works Golf Course was built near the site of Anaconda's first copper smelter. A more advanced smelter, where the smokestack remains, was built to the southeast. Leader photo by James Wisniewski*

the Anaconda Company's "Old Works" smelting operations.

Visitors can shoulder a backpack or daypack and find solitude in the Anaconda-Pintler Wilderness or inquire into local history. They can cast for trout in nearby rivers, streams and mountain lakes. Old logging roads beckon mountain bikers and Forest Service campgrounds provide sites for tents or RVs.

During other seasons, visitors pursue other activities.

During the winter there's ice fishing at Georgetown Lake, snowmobiling, downhill skiing at Discovery Ski area about 14 miles west of Anaconda off Montana Highway 1 or cross-



country skiing at the Mount Haggin Nordic Ski area about 15 miles south of Anaconda off Mill Creek Highway, also known as Highway 274, which is the same road to Wisdom.

Fall brings hunters from near and far to walk through the woods and hills in search of elk, mule deer, white-tailed deer and other big game animals.

Wildlife viewing is a year-round activity in Anaconda-Deer Lodge County. And keen eyes can spot bighorn sheep about six miles west of Anaconda, mountain goats in Lost Creek State

Park and moose, elk and deer just outside of town. And there are raptors of many species in Big Sky Country. Black bear roam the hills, as do mountain lions. There also have been unconfirmed reports of grizzly sightings in the Anaconda-Pintler Wilderness and wolves have been spotted, too.

Shop the Smelter City's unique stores for gifts, artwork and souvenirs of your stay.

Anaconda — where Main Street meets the mountains. Enjoy your stay.

For more information on what's happening during your visit to the Smelter City, call Discover Anaconda at 406-563-2400, stop by the Visitor's Center at 306 E. Park Ave. or visit its website at [www.discoveranaconda.com](http://www.discoveranaconda.com).



A mountain biker takes a corner at Discovery Bike Park when Discovery Ski Area opens up to summer mountain biking. Take Montana 1 west from Anaconda about 15 miles to Southern Cross Road near Georgetown Lake. Take a right (north) and continue for 4 miles to Discovery Ski Area. Leader photo by James Wisniewski

The ice sculpture contest, top, and frozen turkey bowling are popular parts of Anaconda's Festival of the Winter Moon, which is held annually in January. Leader photo by James S. Rosien and Nikki Johnson

1310 East Commercial • Anaconda, Montana  
(406) 563-6060

# Anaconda Calendar of Activities

## June 2023

- **Anaconda Historical Bus Tours**  
- Bus tours are scheduled at 10 a.m. and 2 p.m. Monday through Friday and at 10 a.m. on Saturdays at the Discover Anaconda Visitors Center at 306 E. Park Ave. Call (406) 563-2400.
- **Lost Creek Raceway**  
- Races are scheduled every weekend at 595 Galen Rd. Go to the website [lostcreek-raceway.com/schedule](http://lostcreek-raceway.com/schedule) to see the full 2022 racing schedule.
- **Anaconda Saddle Club – June 21**  
- Summer Solstice Barrel and Pole Jackpot on Wednesday, June 21 at 81 Saddle Club Dr. (Montana Highway 1 West).
- **St. Timothy’s Summer Music Festival – June 25**  
- Rob and Halladay Quist on Sunday, June 25 at 4 p.m. at St. Timothy’s Chapel at 2285 Southern Cross Rd. above Georgetown Lake. Visit [sttimothysmusic.org](http://sttimothysmusic.org) for tickets.

## July 2023

- **Anaconda Historical Bus Tours**  
- Bus tours are scheduled at 10 a.m. and 2 p.m. Monday through Friday and at 10 a.m. on Saturdays at the Discover Anaconda Visitors Center at 306 E. Park Ave. Call (406) 563-2400.
- **Lost Creek Raceway**  
- Races are scheduled every weekend at 595 Galen Rd. Go to the website [lostcreek-raceway.com/schedule](http://lostcreek-raceway.com/schedule) to see the full 2022 racing schedule.
- **Fourth of July Celebration – July 4**  
- Parade at noon at Georgetown Lake.  
- Parade at 2 p.m. in Anaconda.  
- Concert at 6 p.m. at Washoe Park.  
- Fireworks at dusk over Washoe Park.
- **Goosetown Softball Tournament – July 7-9**  
- The Goosetown “Best in the West” Softball Tournament will be held Friday through Sunday, July 7-9, at local softball venues. For more information, call (406) 560-1197.
- **St. Timothy’s Summer Music Festival – July 9**  
- The Montana Chamber Music Society on Sunday, July 9 at 4

p.m. at St. Timothy’s Chapel at 2285 Southern Cross Rd. above Georgetown Lake. Visit [sttimothysmusic.org](http://sttimothysmusic.org) for tickets.

- **Anaconda Community Market – Thursdays from July 6 to Sept. 7**  
- Local growers and artists connecting Anaconda to fresh food and artisans every week, building a healthier and more sustainable community, every Thursday from 4 p.m. to 7 p.m. between July 6 and Sept. 7 at the 100 block of Main St.
- **Kenny Cook Memorial Car and Bike Show – July 20-22**  
- Pint Night at Smelter City Brewery on Thursday, July 20  
- Memorial Golf Tournament at Anaconda Country Club on Friday, July 21.  
- Car and Bike Show at Kennedy Common on Saturday, July 22 from 9 a.m. to 2 p.m. For more information, visit [www.kennycookmemorialfund.com](http://www.kennycookmemorialfund.com) or call (406) 560-2857.
- **Art in Washoe Park – July 21-23**  
- One of the best shows in southwest Montana with juried arts and crafts booths, ethnic food and live music is offered Friday, Saturday and Sunday, July 21-23 at Washoe Park. For more information call (406) 563-2422 or visit [www.cvmac.org](http://www.cvmac.org).
- **Anaconda Saddle Club – July 22**  
- District II Omoksee on Saturday, July 22 at 81 Saddle Club Dr. (Montana Highway 1 West).
- **St. Timothy’s Summer Music Festival – July 23**  
- Coty Hogue on Sunday, July 23 at 4 p.m. at St. Timothy’s Chapel at 2285 Southern Cross Rd. above Georgetown Lake. Visit [sttimothysmusic.org](http://sttimothysmusic.org) for tickets.

## August 2023

- **Anaconda Historical Bus Tours**  
- Bus tours are scheduled at 10 a.m. and 2 p.m. Monday through Friday and at 10 a.m. on Saturdays at the Discover Anaconda Visitors Center at 306 E. Park Ave. Call (406) 563-2400.
- **Lost Creek Raceway**  
- Races are scheduled every weekend at 595 Galen Rd. Go to the website [lostcreek-raceway.com/schedule](http://lostcreek-raceway.com/schedule) to see the full 2022 racing schedule.
- **Anaconda Community Market – Thursdays from July 6 to Sept. 7**  
- Local growers and artists connecting Anaconda to fresh food and artisans every week, building a healthier and more sustainable community, every Thursday from 4 p.m. to 7 p.m. between July 6 and Sept. 7 at the 100 block of Main St.
- **Smeltermens Day Celebration – Aug. 4-6**  
Call Discover Anaconda at (406) 563-2400 for details on the following events:  
- Downtown Sidewalk Sales from 9 a.m. to 4 p.m. and Artwalk from 5 p.m. to 7 p.m. on Friday, Aug. 4 in the downtown area.  
- Smelter City Scamper 5K, 10K, Half-Marathon and One-Block Kinder Sprint on Saturday morning, Aug. 5 at Kennedy Common.  
- Smeltermens Day Brewfest with microbrews, food and music from 11 a.m. to 4 p.m. on Saturday, Aug. 5 at Kennedy Common.



**Treasure Town Market**  
*Anaconda, Montana*

---

Rocks • Oils • Incense • Souvenirs • Gifts • & More!

---

Call for weekly hours **406-491-1911**  
1/4 mile west of Anaconda on Hwy. #1  
[Facebook.com/TreasureTownMT](https://www.facebook.com/TreasureTownMT)



- Bus Tours to the Stack at 9 a.m., 11 a.m., 1 p.m., 3 p.m. and 5 p.m. on Saturday, Aug. 5.

- Bus Tours to the Stack at 9 a.m., 11 a.m. and 2:30 p.m. on Sunday, Aug. 6.

- Smeltermens Day Parade and Children's Fair, starts at 1 p.m. on Sunday, Aug. 6 at Kennedy Common.

• **St. Timothy's Summer Music Festival – Aug. 6**

- Bob Bowman on Sunday, Aug. 6 at 4 p.m. at St. Timothy's Chapel at 2285 Southern Cross Rd. above Georgetown Lake. Visit [sttimothysmusic.org](http://sttimothysmusic.org) for tickets.

• **Anaconda Saddle Club – Aug. 9**

- Hot Summer Night Barrel and Pole Jackpot on Wednesday, Aug. 9 at 81 Saddle Club Dr. (Montana Highway 1 West).

• **Smelter City Throwdown – Aug. 11-12**

- The Smelter City Throwdown Cornhole Tournament Fundraiser will run all day on Friday and Saturday, Aug. 11-12 at the Washoe Park baseball field.

• **St. Timothy's Summer Music Festival – Aug. 20**

- Michael Lewis Aaberg on Sunday, Aug. 20 at 4 p.m. at St. Timothy's Chapel at 2285 Southern Cross Rd. above Georgetown Lake. Visit [sttimothysmusic.org](http://sttimothysmusic.org) for tickets.

## September 2023

• **Lost Creek Raceway**

- Races are scheduled every weekend at 595 Galen Rd. Go to the website [lostcreek-raceway.com/schedule](http://lostcreek-raceway.com/schedule) to see the full 2022 racing schedule.

• **Montana Shakespeare in the Park – Sept. 5**

- Measure for Measure will be performed on Tuesday, Sept. 5 at 5:30 p.m. at Washoe Park.

• **Anaconda Community Market – Thursdays from July 6 to Sept. 7**

- Local growers and artists connecting Anaconda to fresh food and artisans every week, building a healthier and more sustainable community, every Thursday from 4 p.m. to 7 p.m. between July 6 and Sept. 7 at the 100 block of Main St.

• **Anaconda Wildlife Art Expo – Sept. 22-24**

Copper Village is proud to bring back the Wildlife Art Expo. An artist meet-and-greet will be held on Friday, Sept. 22 at Copper Village, and a Wild Game Feed and Live Auction at The Elks on Saturday, Sept. 23, with art displayed at businesses and other venues around town throughout the weekend. Call (406) 563-2422 for more information.

## October 2023

• **Oktoberfest – Oct. 7**

- Arts and crafts booths, German food, a farmer's market and beer garden will be at Copper Village on Saturday, Oct. 7.

• **Six Hours of Disco mountain bike race – Oct. 14**

- A cross-country mountain bike race hosted by the Anaconda Trail Society, a race-against-the-lock to complete as many laps as you can in six hours around the Echo Lake Trail System. The event starts and ends in the parking lot at the base of Discovery Ski Area at 180 Discovery Basin Rd.

• **Anaconda Live! Community Concert Series – Oct. 27**

- Yesterday Once More – A Tribute to Karen Carpenter, at

7:30 p.m. on Friday, Oct. 27 at the Washoe Theatre. For more information, call (406) 560-2953.

## November 2023

• **Annual Christmas Stroll – Nov. 24**

- The Christmas Tree Lighting Ceremony will be at 6 p.m. on Friday, Nov. 24 at Kennedy Common followed by a stroll through downtown Anaconda.

## December 2023

• **Good Neighbor Day – Dec. 3**

- Every year, Anaconda honors someone who has donated their time for the betterment of the community with the Good Neighbor Award, which is presented at the Discover Anaconda Visitors Center the first Sunday in December.

• **Ladies Night Out – Dec. 7**

- This annual event is held at the Elks Lodge in Anaconda as a fundraiser for Copper Village.

## January 2024

• **Festival of the Winter Moon – Jan. 13**

- Anaconda's winter festival falls on the second Saturday of January, with an ice sculpture contest around town, ice skating at Kennedy Common, frozen turkey bowling at Smelter City Brewery and more.

## February 2024

• **Library Wine and Cheese**

- Typically held the second Sunday of February at the Hearst Free Library as a fundraiser for the Friends of Hearst Free Library.

• **Anaconda Live! Community Concert Series – Feb. 23**

- Yu and I Violin and Guitar at 7:30 p.m. on Friday, Feb. 23 at the Washoe Theatre. For more information, call (406) 560-2953.

## March 2024

• **St. Paddy's Day Race**

- The Saturday before St. Patrick's Day, the St. Paddy's Day Race is a fun run or walk with different classes for all runners. For more information, visit [www.anacondaah.com](http://www.anacondaah.com).

• **St. Patrick's Day Parade**

- On March 17, join Anaconda in celebrating St. Patrick's Day with the Ancient Order of Hibernians and Ladies Ancient Order of Hibernians. The parade begins at the AOHS Hall at 106 Cherry St. and goes through downtown Anaconda.

## April 2024

• **Anaconda Live! Community Concert Series – April 16**

- Derek Nelson at 7:30 p.m. on Friday, April 16 at the Washoe Theatre. For more information, call (406) 560-2953.

**Email your special event news and announcements to the Anaconda Leader:  
[leadernews@anacondaleader.com](mailto:leadernews@anacondaleader.com)**

# Take a closer look at Anaconda's historical sites on a bus tour

Visitors to Anaconda can get a firsthand look at the community by peering through the windows of a red, vintage 1936 White bus that originally operated in Glacier National Park.

The antique bus leaves from the Visitor's Center at Discover Anaconda at the corner of Cherry Street and Park Avenue. Along the route, visitors will learn:

- The 1894 City Hall, now the Copper Village Museum and Art Center, at Cedar and Commercial, was constructed with pressed brick from the Standard Fire Brick Co., granite from local quarries and copper smelted in Anaconda. The building housed city offices and courts until 1976 when city/county governments consolidated and moved to the Anaconda-Deer Lodge County Courthouse on Main Street.

- The Old Works, site of the first of the city's three smelters, and the western edge of the Old Works Golf Course, a Jack Nicklaus Signature Course that has received national acclaim.

- The Washoe Park Trout Hatchery, going into Washoe Park itself.

- Washoe Park, established by the Anaconda Co. in 1890 for employees. The visitor sees the town's oldest building, the 1865 Glover Cabin, which is listed on the National Register of Historic Places.

- That Anaconda's history is entwined with that of the nation is exemplified by Mitchell Stadium, built by the Works Progress Association (WPA) in 1937.

- The Butte, Anaconda and Pacific (BA&P) Railway. Another example of Daly's business acumen, the BA&P was built because Daly objected to what he considered the exorbitant charges of other railroad companies.

His partner was railroad pioneer and founder of the Great Northern Railroad, James J. Hill of St. Paul, Minn.

- Approaching Main Street, the visitor is introduced to the Montana Hotel — with the history lesson of Daly's failure to have Anaconda chosen as the capital of Montana, and the tragic loss of the Montana Hotel as a historic landmark. Opened in 1889, the structure lost its National Register of Historic Places designation in 1979 because the owner removed the top two floors.

- Traveling east on Park Avenue, the visitor is introduced to several landmarks in quick succession, from the Visitor's Center and recently renovated Davidson building, to the Club Moderne, an excellent example of Art Deco; to the brewery building to Benny Goodman Park, named for a former mayor and not the Big Band leader.

- The "Short Stack" interpretive site, which is the smallest state park in Montana, offers visitors a sense of the stack's proportions.

- AFFCO, originally Tuttle Manufacturing, then the Anaconda Co. Foundry, was once the most complete foundry in the northwest — again, a result of Daly's thriftiness, with pattern and molding operations, capabilities for working with both iron and brass, all supported by machine, electric, blacksmith and boiler shops.

- After introductions to early Anaconda's more worldly aspects, from bars to brothels, the tour introduces churches, with stops (barring special services in progress) at St. Peter's Roman Catholic and St. Mark's Episcopal churches.

- In Goosetown, one of the three districts in the National Register of Historic Places, visitors learn how the neighborhood acquired its name and learn how the smelters and their families lived.

- Buildings close to the Montana Hotel building, both in proximity, as well as recognition, are the U.S. Post Office, on the National Register since 1986, and the Washoe Theater, registered since 1982.

Both built in the 1930s, the buildings fascinate visitors.

- The Post Office, because it was built under cost — Congress had appropriated \$150,000, with construction costing only \$130,000. The \$200,000 Washoe because of its opulence in Art Deco — intricate designs in silver, gold and copper leaf and elaborate light fixtures.

- Main Street is the eastern edge of the Western District of the National Register of Historic Places. Just as Goosetown reflects the ambience of the workers at the Anaconda Co., the Western District reflects the lifestyles of higher management and of Daly and his extended family. The visitor is introduced to the dominant building on Main Street, the 1898 Courthouse, a Neo-Classical structure (and the adjacent jail, since converted to other uses) built on lots which cost \$8,000, the building itself costing \$100,539.50 to construct.

- A number of private homes with historical significance, some of which have been restored.

Enjoy your trip around historic Anaconda!

## Lisac's Tire of Anaconda Tire Sale!

Everyday Low Prices  
Fast Service



**TIRE SUPPLY**  
SERVICE CENTERS

Open Monday thru Sat. 8-5  
1100 W. Park 563-6110







# WHITETAIL PROPERTIES REAL ESTATE

HUNTING | RANCH | FARM | TIMBER



**ANDREW HEPPE**  
SOUTHWEST MONTANA  
LAND SPECIALIST

📞 **406.479.9560**

🌐 [andrew.heppe@whitetailproperties.com](mailto:andrew.heppe@whitetailproperties.com)



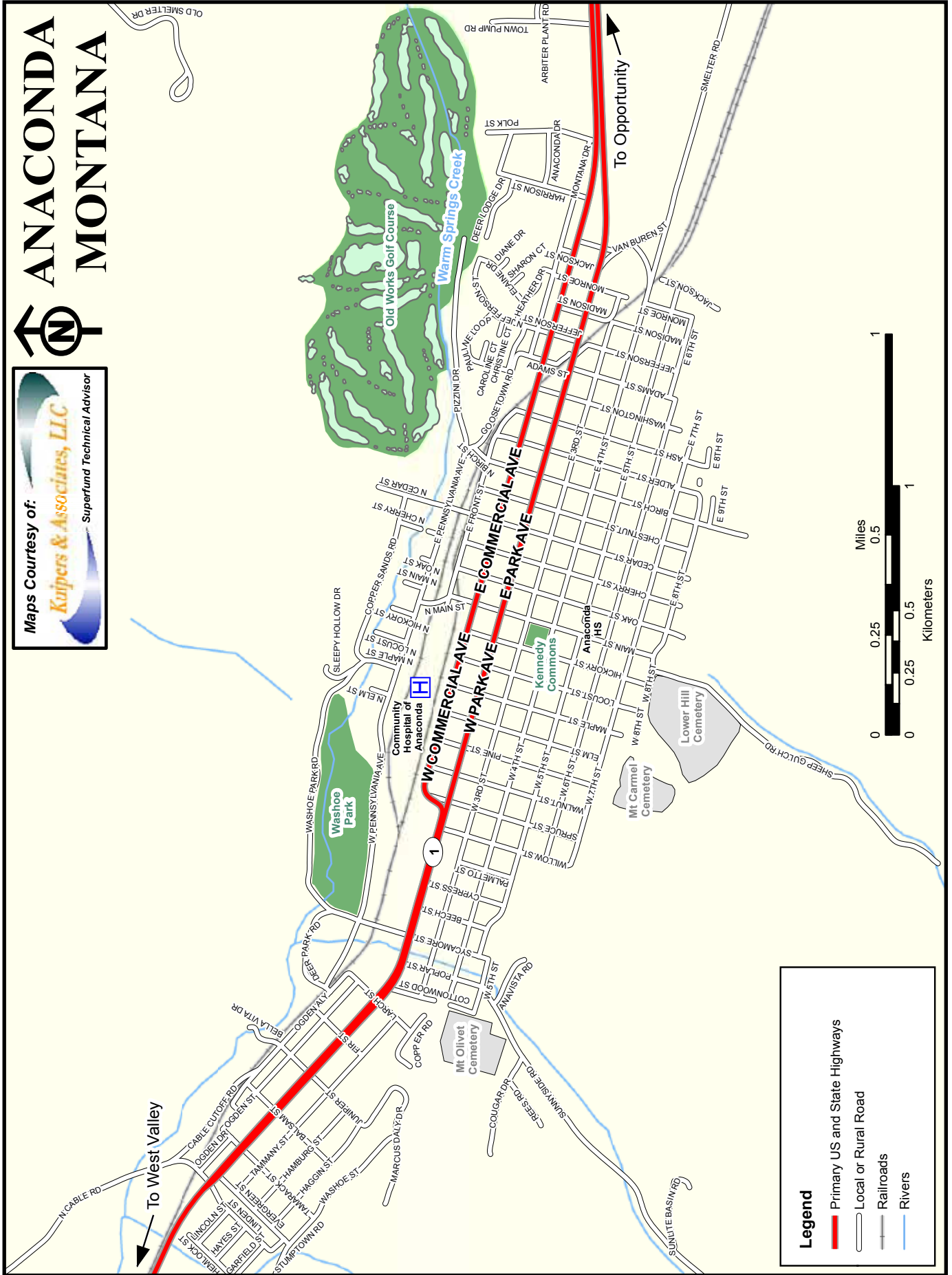
Whitetail Properties Real Estate, LLC DBA Whitetail Properties, DBA Whitetail Properties Real Estate. In the States of Nebraska & North Dakota DBA Whitetail Trophy Properties Real Estate LLC. In Ohio, DBA Whitetail Properties Ranch & Farm Auctions. Licensed in CO, MN, ND, SD, TN & WI - Jeffrey Evans, Broker. Licensed in FL, KS & MO - Jefferson Kirk Gilbert, Broker. Licensed in TX & NM - Joey Bellington, Broker. Licensed in IN - Dan Bates, Broker. Licensed in AL, GA, LA, & MS - Sybil Stewart, Broker. Licensed in TN - Tim Burnette, Broker. Licensed in TN & MS - Josh Monk, Broker. Licensed in AR - Anthony Chrisco, Broker. Licensed in NC, SC, VA - Chio Camp, Broker. Licensed in IA, NC - Richard F. Baugh, Broker. Licensed in MI - Edmund Joel Nogaski, Broker. Licensed in IL, MD, WV - Debbie S. Laux, Broker. Licensed in ID, MT, OR, UT, WA, WY & NV - Aaron Milliken, Broker. Licensed in NY - John Myers, Real Estate Broker. Licensed in OK - Dean Anderson, Broker. Licensed in KY, ME & NH - Derek Fisher, Broker. Licensed in OH - Jeremy Schaefer, Principal Broker. Licensed in NE & SD - Jason Schendt, Broker. Licensed in MS - Chipper Gibbes, Broker. Licensed in PA - Jack Brown, Broker.



# ANACONDA MONTANA



Maps Courtesy of:  
**Kuipers & Associates, LLC**  
Superfund Technical Advisor





The Law Firm Of

# **K** Knight & Dahood

---

General Practice of Law

---

113 East Third Street • Anaconda, Montana  
**(406) 563-3424** in MT 1-800-823-3424

[www.kdesdlaw.com](http://www.kdesdlaw.com)



# The community of Copperopolis?

The city of Anaconda was named after the company to which it owed its existence, but not without objections from the founder, Copper King Marcus Daly.

Clinton H. Moore, the first local postmaster, is responsible for naming the town “Anaconda.” The following item, which quoted Moore, appeared in the Anaconda Standard on July 1, 1923:

“Mr. Daly suggested the name of ‘Copperopolis,’ but I reminded him that a Copperopolis already existed in the eastern part of the state. I suggested ‘Anaconda,’ but Mr. Daly, at the time, did not seem to favor it. He gave no reason for opposing it, however, and I never knew why he didn’t like the suggestion. Nothing more was said about it until the papers relative to my 1883 appointment as postmaster arrived. With them came a request from the department in Washington to give the post office a name. I wrote ‘Anaconda’ and returned them to Washington.”

There is some controversy among the old-timers as to which was the first frame building to go up. It seems certain from all the testimony available that J.B. Keefe succeeded in getting the first load of lumber for his “hotel” at the corner of Main and Front streets.

Regarding the first sale of town lots in May, Mr. Read recalls that: “Mr. Daly, accompanied by a W.L. Hoge, M.J. Connell, James Shields, W.R. Kenyon, J. Rosa Clara and others from Butte, had arrived that day and were out on the townsite, all wrapped up as well as they could be, for there was a gale blowing off Mount Haggin.

“Mr. Shields had tied his flop hat down with a red bandana and he was really a picture of misery. Mr. Daly, pointing out the stakes, told them they were at the intersection of Main and First streets and that corner lots there were \$750 and inside lots \$500. This was the last straw for Shields, who then and there consigned the townsite, the town lots, the weather and everything around there to perdition. But Mr. Hoge, Mr. Connell, Mr. Clark and Mr. Kenyon each selected a corner.”



*Stop for a cool drink of spring water from the Spring Hill Drinking Fountain about five miles west of Anaconda off Montana Highway 1 at the Spring Hill picnic area in the Beaverhead-Deerlodge National Forest. Leader photo by Kathie R. Miller*

# Softball tournaments draw players to town throughout the summer

The annual Hit the Pit Fast Pitch Tournament for girl's 18-and-under and Goosetown Softball Tournament draws players to the Anaconda area from across Montana and the Pacific Northwest.

Hit the Pit is held in Anaconda and Butte and takes place annually during the second weekend in June drawing about 40 teams each year for play at Anaconda's Charlotte Yeoman Martin Sports Complex, which has six of the best baseball fields in the state.

The tournament guarantees each participating team will get to play in at least four games. Awards are given to the top three teams in each division.

Charlotte Yeoman Martin Sports Complex has extensive parking for campers and vehicles.

For more information about the Hit the Pit Fast Pitch Tournament, check out the Hit the Pit page on Facebook.

The annual Goosetown Men and Women ASA Softball Tournament brings about 130 teams to Anaconda to play softball at Washoe Park. Goosetown, which is billed as the as the "Best and Funnest" Softball Tournament in the West, takes place the second weekend in July at Washoe Park, which has plenty of camping spots available. The event includes a home run contest and seven divisions of play.

For more information about Goosetown, call (406) 560-1197.



A softball player eyes in incoming pitch during the Goosetown Softball Tournament, which draws players from all over the Pacific Northwest to Anaconda in July. Leader photo by Paul Johns

Anaconda's Famous  
**THOMPSON'S BAR**

- Cold Tap Beer
- Packaged Liquor
- Adult Legalized Games



**Live Poker**  
Thursday Night



Ice  
To  
Go!

Where Old Friends Gather  
&  
New Friends Meet!

213 Main Street 563-9921  
Across from the Post Office

# *Beaver Dam Park built at site of the old Beaver Dam School*

Sen. Max Baucus did the honors of cutting the ribbon April 13, 2012 at Deer Lodge County's newest recreation spot – Beaver Dam Park at the corner of Richards and North Hauser streets in Opportunity.

The \$1.2 million park includes a 52-foot long by 26-foot wide pavilion in addition to a basketball court, a baseball field, playground equipment and bathrooms.

The lush green park has a 10-foot wide paved bike/pedestrian path around its perimeter and plenty of trees and picnic tables for the public's use.

Beaver Dam Park includes a trailhead at the



Leader photos: Kathie R. Miller

west end that will one day connect it to the Greenway Trail System that is being built from Butte to Anaconda.

The new county park includes historic lampposts made by AFFCO Foundry, which was once the Anaconda Company's foundry, using patterns of the lampposts that you'll find throughout Anaconda.

The park is built at the former site of Beaver Dam School, which was closed in the 1970. The Opportunity Citizens Protection Association spearheaded the project to redevelop the former school campus into a community park. The old school building was mothballed with its exterior painted.

For more information about Beaver Dam Park or any of the county's other parks, call 406-563-4010.







*Hearst Free Library at Fourth and Main streets is a piece of living history. Established by Phoebe Hearst, wife of mining magnate George Hearst and mother of newspaper baron William Randolph Hearst, the historic building opened in 1898 and still serves Anaconda's residents.*

## *Hearst Free Library has kept local readers reading for over a century*

The Hearst Free Library, which is listed on the National Register of Historic Buildings, was donated to the city of Anaconda by Phoebe Hearst, whose husband invested with Marcus Daly in the Montana copper industry.

Although Hearst had sold her interest in the Anaconda Copper Mining Co. when she came here in 1895, she asked the city fathers what she could do for the town.

When they hesitated, she said, "I have an idea, I have in mind a library." They replied, "That is what we need, and what we want."

Asked by the gracious lady why they hadn't told her sooner, officials replied that a library would cost too much money and they did not want to impose on her.

When the Hearst Free Library opened its doors on June 12, 1898, the Anaconda Standard reported:

"In a commanding position on Main Street, with lines of impressive, classical beauty, stands

the Hearst Free Public Library, a gift to the people of Anaconda from Mrs. Phoebe Hearst.

"The first impression one receives is of massive substantiality, an effect which is heightened by the strikingly Grecian purity of outline and the almost severe use of ornamentation which by itself would give an impression of stiffness were it not for the graceful strength imparted to the design by the great spreading arches of the windows.

The building is one of the best type of library structure, and has none equal in Montana; it will compare favorably with any public building in the West."

The library's doors opened to the public June 1, 1898, and are still open. Librarians stand ready to serve the community of Anaconda — more than a century after the doors first swung open. Inside you'll find the original woodwork, lights and ornate architect along side modern conveniences like computers and a Wi-Fi hot spot.

# Stack stands as a remembrance

It looms above the Deer Lodge Valley and the city and is visible from miles away. The 585-foot-plus tall Anaconda smelter smoke stack could swallow the Washington Monument.

Anacondans saved it from demolition in 1985. The stack now stands as a monument to the thousands of men and women who worked at the smelter, as a symbol of the complex industrial history of this one-company city, and as a towering reminder to the people of Montana of the power of the Anaconda Co. in the state's history.

The stack, listed on the National Register of Historic Places, was deeded to the state by the Atlantic Richfield Co., the Anaconda Company's successor.

The late Bob Vine, a local historian, once described the importance of the stack in the lives of Anacondans.

"Everybody would get up in the morning and look to see if there was smoke coming out of the stack, and if there was, God was in His heaven and all was right with the world and we knew we were going to have a paycheck."

The huge brick smokestack was constructed in 1918 as part of the Washoe Smelter, replacing a smaller 300-foot stack. When the smelter itself was built at the turn of the century, it was the largest nonferrous metallurgical plant in the world. And the stack is still the largest free-standing masonry structure. The facility was shut down in



Anaconda's stack stands 585 feet, 1 1/2 inches on Smelter Hill.

September 1980. Demolition of more than 100 structures was completed during the summer of 1986, leaving only the stack as the vestige of this once internationally-significant industrial complex.

Eventually, when environmental stabilization of the

## A GIFT THAT LASTS ALL YEAR...

Name \_\_\_\_\_

Address \_\_\_\_\_

City & Zip \_\_\_\_\_

Phone \_\_\_\_\_

- LOCAL NEWS
- REAL ESTATE
- SPECIAL EVENTS
- ENTERTAINMENT

[www.anacondaleader.com](http://www.anacondaleader.com)

1 YEAR IN-COUNTY	\$61.00
1 YEAR OUT-OF-COUNTY	\$78.00
1 YEAR OUT-OF-STATE	\$85.00
WEBSITE ONLY	\$61.00

### The Anaconda Leader

MAIL OR BRING TO:  
121 Main Street  
Anaconda, MT 59711  
(406) 563-5283

Email: [leadernews@anacondaleader.com](mailto:leadernews@anacondaleader.com)  
[advertising@anacondaleader.com](mailto:advertising@anacondaleader.com)





Guided tours of the Smelter have become a popular part of Smeltermen's Day Weekend, which runs Aug. 6-8, 2021. Leader photo by James S. Rosien

plant site is complete, it may be possible for visitors to approach the base of the stack on tours, but until that time it can be viewed from below. In addition, an interpretive site near Benny Goodman Park offers visitors a sense of the stack's immense size.

It is hard to imagine the dimensions of the huge structure against the backdrop of the majestic Rocky Mountains. Set on a small hill, it rises a total of 1,000 feet above the city. The base of the stack, built in the form of a truncated octagon, is made of 5,100 cubic yards of concrete. The outside diameter of the stack at the base is 86 feet, while the inside diameter is 75 feet. The walls at the base are 5 feet, 4 inches thick. The inside diameter at the top is 60 feet.

The 30-foot high octagonal base required a mixture of 20,891 sacks of cement, 50 railroad cars of sand and 118 cars of crushed rock — all of which produced 5,100 cubic yards of concrete weighing 9,250 tons. Special tile blocks, 2,464,672 of them to be exact, were used to construct the stack. They are equivalent to 6,672,214 ordinary bricks. To complete the structure, 41,350 sacks of

cement, 77 cars of sand and 37 cars of fire clay were used. The stack weighs 23,810 tons and required 142 days to build.

## Stack Facts

### Smelter Stack

Height: 585 ft., 1.5 inches  
 Outside diam. of base: 86 ft., plus  
 Inside diam., top: 60 ft., plus  
 First smoke: May 5, 1919

### Washington Monument

Height: 555 feet, 5 1/8 inches  
 Width at base: 55 feet, plus  
 Width at top: 34 feet, plus  
 Open to public: Oct. 9, 1888





## *'Short Stack' offers perspective*

For a sense of the actual dimensions of the mighty stack, visit Montana's smallest state park — The Anaconda Smoke Stack State Park, which includes an interpretive sight beneath Smelter Hill, at the southeast edge of Anaconda.

The interpretive sight includes a "Short Stack" with the same circumference as the base of the stack. It is the only formal public area where residents and visitors can view the 585-foot-plus stack. In addition, the interpretive site commemorates the thousands of men and women who made their living at the smelter, through engraved bricks incorporated into the design of the model.

The Short Stack was a volunteer, grant-funded project, designed to satisfy the curiosity of locals and tourists alike. Local citizens, businesses and the Anaconda Job Corps Center volunteered their time and labor to construct the Short Stack. Interpretive signs provide a brief overview of the history of the smelter and the surrounding area.

Ongoing environmental remediation precludes actual visits, for now, to the stack itself and Smelter Hill. Plans to provide guided tours to the stack are on hold pending reclamation of Smelter Hill and approval by the Atlantic Richfield Co., which owns the surrounding land, and the Montana Department of Fish, Wildlife and Parks, which manages the park.

In the meantime, those interested can visit the Short Stack and view the real stack through telescopes, and read about the history of the stack and the smelting process.

You can get to the site by following Fourth Street east, continuing straight where the road bears left into Jackson. Coming from the east into town, take a left turn onto Jackson Street and turn right onto Fourth. The site is east of Benny Goodman Park.



*Full-size metal sculptures of a smelterman, complete with a lunch box, a railroader with a lantern and a miner with a pick, stand at the entrance to Montana's smallest State Park – "Anaconda Smoke Stack State Park" located at the base of where the smelter once stood east of Benny Goodman Park. Students from Anaconda High School welded the smelterman and railroader and students from Butte High created the miner as part of a vocational education course. Leader photo by Kathie R. Miller*

# *Old City Hall building houses art gallery and historical museum*

Copper King Marcus Daly built mines, smelters, railroads, newspapers, cemeteries, and the city of Anaconda.

Daly dreamed of making Anaconda the state capital and spared no expense to make its public buildings spectacular.

The Anaconda City Hall was built in 1895 of local materials — pressed brick and Anaconda granite, with Anaconda copper trim. It was, by most accounts, the finest City Hall in the northwest.

The building was occupied in 1896 and housed all of the city government offices, the fire engine house and all the police department. All agreed the new building was “a vast improvement over the dingy, foul-aired quarters that were used for so many years” — at least until aromas from the fire department’s horses began to waft up to council chambers.

The building was used until 1976, when the city and county governments consolidated and moved to the County Courthouse, and the City Hall was boarded up and abandoned.

In 1982, Copper Village Museum and Arts Center and the Historical Society began renovating the old City Hall into a regional cultural center. In an ongoing restoration project; the building was insulated, the roof and windows were replaced, brick work cleaned and re-pointed, mechanical and electrical systems updated.

Finish work remains under way on the existing structure, with ongoing plans to someday occupy the grand second floor.

The old City Hall Center now houses an art gallery, crafts center, a retail shop and the Historical Museum. Copper Village hopes to one day add a community theater and restaurant.



Come Sit a spell and enjoy a hot or cold espresso based drink. Choose from our extensive selection of flavors and choices

**FULL LIQUOR LICENSE**  
*Serving*  
*Boody Marys or Caesars*  
*on Saturdays only 9-2*

**OPEN**  
Monday thru Friday  
7:30-5 Sat. 9-3



**Wireless Internet Access!**

Bagels, Fresh Baked Dessert Breads  
Breakfast Sandwiches • Muffins • Scones  
Lunch Sandwiches • Soup  
Paninis • Salads  
Latte • Chai Tea • Bubble Tea  
Hot Chocolate • Frappuccino • Iced Coffee  
Italian Soda • Smoothies • Milkshakes



**Indoor & Outdoor Seating!**

Conveniently located in the middle of downtown shopping!  
Grab a cup to go or sit and read the newspaper!

**112 E. Park (406) 563-4596**

# Smeltermens Day 2023

**AUGUST**  
**4th**

**DOWNTOWN SIDEWALK  
SALES  
ARTWALK**



**AUGUST**  
**5th**

**SMELTER CITY SCAMPER  
BREWFEST  
BUS TOURS**



**AUGUST**  
**6th**

**SMELTERMENS DAY  
PARADE  
CHILDRENS GAMES  
BUS TOURS**



For more info visit the Smeltermens Day  
Facebook Event

# ANACONDA





Three moose step out of Georgetown Lake after feeding near the shore early one morning. Photo courtesy of Jim Greene

## Strategies for Avoiding Injuries While Hiking and Camping

- Blisters hurt! Wear appropriate socks and footwear.
- Stretch and warm up prior to your hike.
- Watch your step to avoid twisting an ankle.
- Stay mindful of your physical abilities.
- Sunscreen and mosquito spray are lifesavers.
- Make sure to stay hydrated.
- Always carry energy dense snacks.
- Don't go alone.



Have fun and safely enjoy your Montana adventure!



**Anaconda**  
**406-563-0797**  
Downtown  
110 Main Street

Walk-ins Welcome!  
[pintlerpt.com](http://pintlerpt.com)

**Butte**  
**406-299-2491**  
Hennessy Building  
130 N. Main St., #200

*The Finest Montana Has To Offer...*



*Steaks - Seafood - Pasta*

# **Barclay II**

*Supper Club and Lounge*

---

*Located alongside the new Forge Hotel - east of Anaconda*

98 Union Avenue • Anaconda • 563-5541



## Adventure Camp: Pit stop along the Continental Divide Trail

The Anaconda Trails Association's (ATS) Adventure Camp in Washoe Park provides a pit stop for those hiking and biking the Continental Divide Trail.

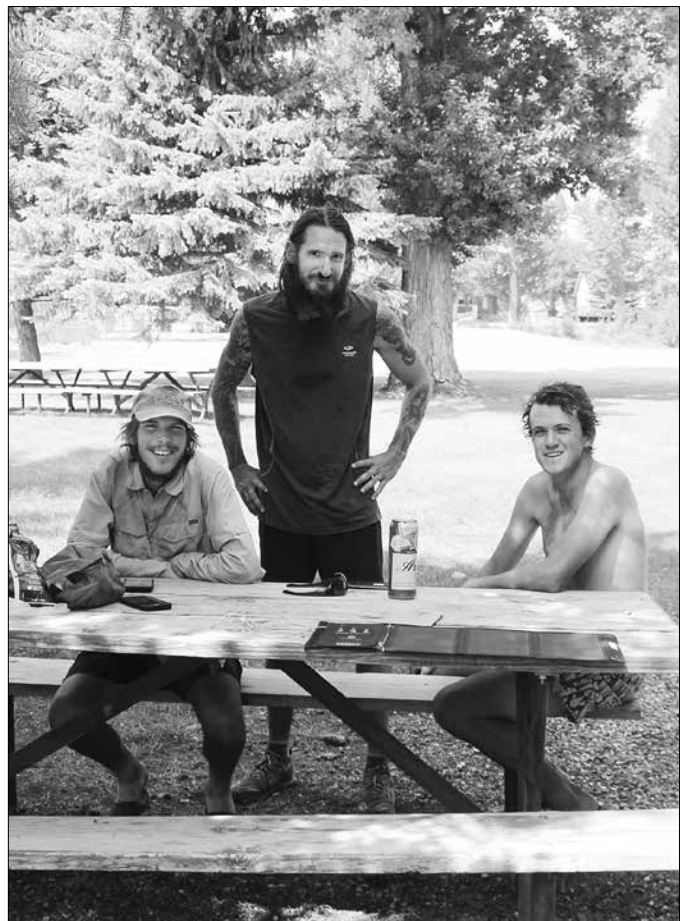
The Adventure Camp is along a 90-mile alternative route taking hikers and bikers through Anaconda on their way to Helena.

The Adventure Camp, which is free to use, gives hikers and bikers a place to charge their cell phones, prepare a meal and store their gear while they camp in the park or visit Anaconda.

Volunteers from the Trail Society clean and maintain the facility, which is secure with a key-code access.

Hikers/bikers are directed to three places to shower for a fee, including the Washoe Park Pool, Goosetown and the Big Sky RV Park.

For more information about the Adventure Camp, call the Anaconda Trails Society at 563-5538 extension 15 or visit their web site at [www.anacondatrailsociety.com](http://www.anacondatrailsociety.com).



*The Anaconda Trail Society's Adventure Camp at Washoe Park, pictured at top, is a great place to stop for hikers and bikers along the Continental Divide. Leader photos by Kathie R. Miller*



# *Kennedy Common . . . . . . an uncommon gift*



Kennedy Common — just a mention of the small park elicits memories for generations of Anacondans. The City Common, renamed Kennedy Common in the 1960s after the assassinated president, has long been a hub of local activity.

Kennedy Common — no one will ever know how many romances began with a waltz there on a warm summer evening, or a kiss stolen in the frosty glow of the Christmas tree in the center of the common's annual skating rink.

The spot has been the favorite for games, band concerts, dances, rallies, and marble tournaments.

Just how the city acquired the plot of land situated in the heart of town is a subject of local debate.

Edwin B. Waterbury, an early day resident who bought and sold real estate and resided in the home he built across from the common at 300 Hickory, donated a portion of the common block to the city, according to Dorothy Rochon-Powers, Waterbury's great-granddaughter.

*Kennedy Common plays a central role during Anaconda's annual Christmas celebration.*

*Historically, each year a tree was felled from surrounding forests, erected by crane (photo above) and decorated for the Christmas season.*

*In 2001, the city-county decided to transplant a live tree to the center of the common which is present all-year round.*

*Each year, when officials determine winter weather has set in for a consistent stay, the Department of Parks and Recreation floods the common to transform it into an ice-skating rink.*





*The Kenny Cook Memorial Scholarship Car and Bike Show is one of Kennedy Common's biggest events of the year, bringing more than a hundred classic cars, trucks and bikes to the park in the center of town in July as a fundraiser for scholarships for Anaconda Junior/Senior High School graduates to enter the trades. The scholarships are in memory of the late Kenny Cook, who ran Cook's Collision until he died unexpectedly at the age of 52. The car and bike show kicks off Thursday, July 20 with a pint night at Smelter City Brewing, followed by a golf tournament at the Anaconda Country Club on Friday, July 21 and wraps up with the show itself on Saturday, July 22 from 9 a.m. to 2 p.m. at the common. For more information, visit [www.kennycookmemorialfund.com](http://www.kennycookmemorialfund.com). Leader photo by Jay Wisniewski*

## *Historic Daly Bank brought back to life*

The historic Daly Bank building has been restored to its original role as a downtown Anaconda landmark at the corner of Main Street and Park Avenue.

The historic building now houses the First Montana Bank.

Built in 1895 as the Daly, Hoge & Company Bank, it was the city's second bank.

The restoration paid painstaking detail to the building's original features, including marble floors, delicate stencil painted ceilings, antique light fixtures and extensive hardwood trim.

The Daly Bank's original vault is back in service, its massive door shined to a high gloss.



*The Daly Bank Building at the corner of Main Street and Park Avenue is on the National Register of Historic Places. Its renovation brought its historic character and charm back to life.*



## *There are plenty of places to camp in ADLC*

Besides established campgrounds, campsites in the Anaconda-Pintler Wilderness offer visitors an opportunity to experience a closer walk with nature.

The U.S. Forest Service asks back-country campers to remember that these forest areas are maintained in their natural, undeveloped state as restful retreats.

Those who venture into the Pintlers will find beautiful scenery and rugged landscapes.

Here are some tips from the Forest Service to help you enjoy this grandeur:

- Register at trail entrances.

It only takes a moment of your time and the information will help the Forest Service meet your needs.

- Respect people's desire for solitude. Keep groups small. Select campsites away from other people.
- Avoid misused or overused campsites. Check the map for such areas. Camp out of view from trails in areas where vegetation will not be damaged.

- Select lesser-used trails. Many of the currently less popular areas offer the same wilderness features as the others. Check them out.

- Keep fires to a minimum number and size. Campfires are a part of a wilderness outing but should be used with discretion.

Use small lightweight, portable gas stoves for preparing meals. They are efficient, easy to use and usually leave no visible trace.

Check for fire restrictions during drought conditions.

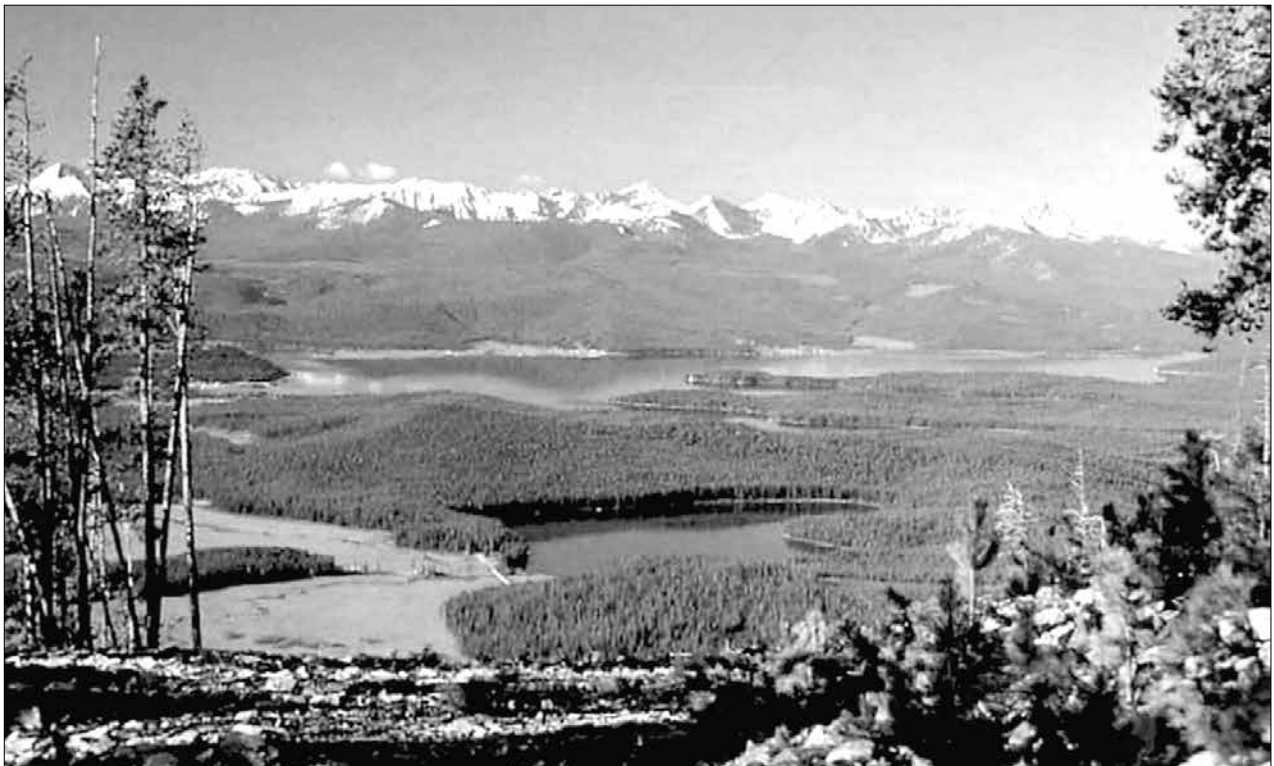
- Pack out all waste material. If you bring it in, remember to take it out.

- Pack a lightweight tent. These are much faster and easier to use, more efficient and comfortable.

- Use a filter before drinking from streams or lakes.

Giardia exists in many mountain streams and water, so either use a filter or bring your own water with you.

For more information about the Beaverhead-Deerlodge National Forest, visit its Web site at [usda.gov/bdnf](http://usda.gov/bdnf).



*The summit of a slope at Discovery Ski area offers a view of Echo Lake, Georgetown Lake, and the Anaconda Range.*



# *Antique street lamps light up Anaconda*

When E. P. Mathewson, Anaconda Smelter general manager, selected lamps for the city's streets, he chose a design patterned after streetlamps in the nation's capital, lights then considered the best in the country.

Today, in a reversal of history, other cities are copying the antique lamps that light Anaconda's streets. Among these are Caras Park and Circle Square Plaza in Missoula.

The antique lampposts, either for replacement or for new placement, are available through AFFCO — successor to the Anaconda Foundry which made the first ones 80 or so years ago, and still owning the original patterns.

The first eight lamps illuminated an area around the Montana Hotel, Oct. 22, 1913, with an evening of festivity. During the next 30 years, the system was expanded throughout the business and residential areas of Anaconda, but the original eight were the impetus. The evening's events are described in the Anaconda Standard:

“What was probably the largest crowd ever assembled on the streets of Anaconda packed Main Street



*The Kiwanis  
Club of  
Anaconda and  
the Montana  
Fish, Wildlife  
& Parks  
Washoe Park  
Trout Hatchery  
sponsor the  
Kiwanis  
Kids Fishing  
Day every  
year at the  
Warm Springs  
gravel pond  
off Montana  
Highway 48  
on the second  
Saturday in  
June. Leader  
photo by Paul  
Johns*



and Park Avenue last night during the celebration marking the flashing on of the new cluster lights. Hundreds of Anacondans and representative delegations from Butte and Deer Lodge cheered as the long rows of pretty globes first became bright, and as many voices re-echoed when Mayor Ed O'Brien appeared in the balcony of the Montana and introduced E.P. Mathewson as Anaconda's best booster.

"The throngs of humanity began to assemble soon after suppertime and by 7 o'clock, the streets were lined with citizens imbued with a feeling which vented itself as the Anaconda and Treasure State bands marched to the intersection of Main Street and Park Avenue.

"Following a delightful serenade with the two bands alternating as dispensers of harmony, the crowd surged in front of the Montana to listen to the speakers. Before the speakers appeared, the Glee club rendered two beautiful numbers.

"Mayor O'Brien introduced E.P. Mathewson, who began:

"The Mayor introduced me as a good booster, but I say that the whole city is composed of boosters."

"Mr. Mathewson then gave a brief comparison of the little smelter town of years ago and the modern city of today. He spoke of the great payroll and declared the people and the city were the best in the United States and that meant the world. The speaker also declared that we would have more paving and lights and finished his talk with 'Let's have a good time.' Mr. Mathewson's talk was interrupted by cheers from the listeners.

"Dan Morony of the Montana Power Company of Butte and a former resident of the city told the home folks of how proud he felt that he had lived here and declared that he always considered Anaconda his home.

"He thanked the people on behalf of the power company and finished with a pleasing boost for the city and its people. Following Mr. Morony, 'Ragtime' Kelly, the boy who sings to beat the band," gave an extemporaneous parody on 'When You Wore a Tulip,' accompanied by the band.

"When Entertainer Kelly had finished, he and the band led the crowd down Park Avenue in an inspection of the improvement district. Following the grand march everyone mingled for a big time.

"The funny antics of maskers and friendly throwing of confetti, with the young and old folks dancing on the pavement, made up the program of the remainder of the evening ..."

In 1989, serious consideration was given to replacing the "antique" system with new standards from Montana Power Company.

However, Anaconda citizens protested and formed a grass roots committee to restore, not replace, the lighting. Through study and research, the group determined that the "antique" lights are an integral element of quaint beauty in the Smelter City's overall sense of place. Therefore, the group concluded, they must be preserved.

At least one city-county commissioner suggested the lighting project be scuttled, only to be told by another that those in the now unlighted areas preferred to wait for repair rather than replacement.

Today, local government officials and citizens are working together to modernize the system with lights having been replaced in several neighborhoods, while maintaining the historic and aesthetic qualities of the original system.

Come visit Anaconda's Treasure

*the beautiful and historic*

# Hearst Free Library

401 Main Street 563-6932

[www.hearstfreelibrary.org](http://www.hearstfreelibrary.org)



**Some of our award-winning services include:**

- Great selection of new fiction and non-fiction
- Large-Print books
- Books on CD
- Films on DVD
- Free Internet Access & Wi-Fi
- Downloadable Books
- Printing & Photocopying Services
- Summer Reading Program

### Hours

Mon. & Fri. 10:00 a.m. - 5:00 p.m.  
Tues.-Thurs: 10:00 a.m. - 6:00 p.m.  
Sat. 10:00 a.m. - 4:00 p.m.







Anaconda's Fourth of July Parade is always a big hit, with classic cars, floats and lots of candy for the kids. Leader photo by James S. Rosien



# GENUINE. MONTANA. EXPERIENCE.

HOT SPRINGS LODGING DINING GOLF SPA



 **FAIRMONT**  
HOT SPRINGS RESORT

FairmontMontana.com | 406.797.3241





# Firefly Cafe

100 Main St. Suite A  
Anaconda MT 406-563-0909



## Dine In or Take-Out Available

Why eat ordinary when you can eat Extraordinary? At Firefly Cafe, located at 200 Main St. Suite A in Anaconda, we feature fresh flavorful dishes from our Signature Salads, Sandwiches, Noodle Bowls, Smoked Meats & more, with all menu items available for dine in or takeout. For dessert, monster brownies, bars, cookies and more are available in the cafe! Open Tu-Sat., our full menu and hours are available on our website, [fireflycafemt.com](http://fireflycafemt.com), over the phone or in the cafe. Call 406-563-0909 to place your order now!

We Feature Tractor Soft Drinks!

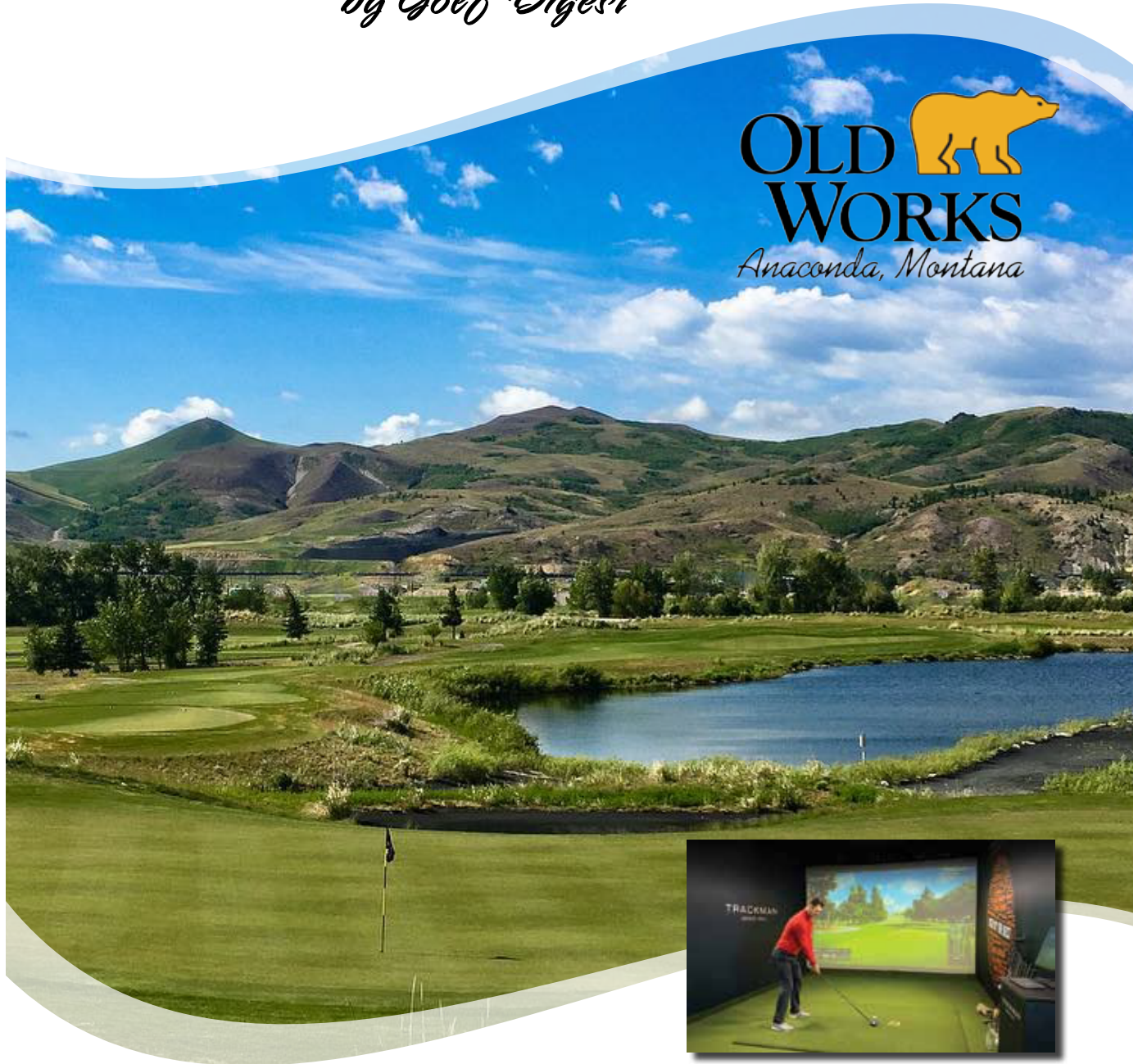
All Natural, Non-GMO Products



# TOP 100 GOLF COURSE

*by Golf Digest*

**OLD WORKS**  
*Anaconda, Montana*



*Now Featuring*  
**Trackman Golf Simulators**  
providing year around entertainment!

**Explore Montana's Only Jack Nicklaus Signature Designed Public Golf Course at Old Works**  
With our newly remodeled clubhouse, including a new bar, dining room and outdoor patio with firepits, Old Works will be a year round social destination for Anaconda. Old Works Golf Course carries on century old traditions originally set by the smeltermen who previously called our grounds home. Jack Nicklaus incorporated many of the relics left behind upon the closure of the Upper and Lower Works in this one-of-a-kind Signature Design. With its affordability, spectacular course conditions, unique bunker composition and our staff's Big Sky hospitality, Old works has built a reputation as one of the most premiere golf experiences in all of the mountain states.

**playoldworks.com | 406.563.5989 | 1205 Pizzini Way, Anaconda, MT 59711**





The Anaconda Saddle Club at 81 Saddle Club Dr. hosts several events during the summer, including the District II Omoksee, a riding sport that originates from the Blackfoot Tribe from a word meaning "Riding Big Dance" on Saturday, July 22. Leader photo by Patrick Williams

**OPEN EVERYDAY!!**



**OR CALL FOR TAKE-OUT  
406.563.5052**

150 SOUTHERN CROSS  
ANACONDA MONTANA 59711



# EAST END CASINO

**Gaming Machines  
Beer & Wine • Mixed Drinks**

1520 E Commercial Anaconda, MT



# *Community Market offers fresh food, cool crafts on Thursdays at 100 block of Main*

The Anaconda Community Market has served as a gathering space during the summer for anyone looking to purchase food and original crafts and wares from dozens of vendors – and now it will do so on a new day at its new location.

Vendors providing food or products directly to the public will set up every Thursday on the 100 block of Main Street from 4 p.m. to 7 p.m starting July 6 and ending Sept. 7.

With a new logo and branding and new organizers, the goal is to connect Anaconda with local growers and artisans every week to build a healthier and more sustainable community.

The Anaconda Community Market supports healthy living, local agriculture and a positive community interaction. Anyone interested in attending the Anaconda Community Market can expect a welcoming environment in the heart of downtown Anaconda at the 100 block of Main Street.

For more information, email [anacondacommunitymarket1@gmail.com](mailto:anacondacommunitymarket1@gmail.com) or call (406) 209-8053.



*The fresh produce is a popular aspect of the Anaconda Community Market. Leader photo by Sidra Wali*



## *Skating abounds at the Smelter City Skate Park*

The Smelter City Skate Park at Benny Goodman Park on the eastern edge of Anaconda has been a hit since the 4,700 square-foot skating area opened in the summer of 2005.

Four years in the making, the park has drawn riders from far and near to take a dip in the concrete bowl and grind the rails. The county contributed \$16,588 to the project from the subdivision park fund, which is generated from developers paying cash to the county in lieu of setting aside land

for parks in subdivisions. The rest of the \$110,000 skateboard park was paid for with grants and donations, including a \$55,000 grant from Fish, Wildlife & Parks Land and Water Conservation Fund and about \$30,500 in grants from McDonalds, ARCo, professional skateboarder Tony Hawk and 4-H. An effort is currently underway to raise funds to revamp the skate park and to build a new one at the West Valley Park.

The Smelter City Skate Park located on the northwest corner of Benny Goodman Park has a few ground rules to ensure safety:

- Kids 10 and younger must be accompanied by an adult.
- Skate at your own risk.
- Helmets are required. Those who don't comply will be asked to leave.
- Other safety gear – knee, hip and elbow pads – are strongly recommended for skateboarders and roller bladers.
- Smoking is prohibited. Police will ticket underage tobacco users.



*Kids at the skatepark do their part to keep it clean.*

### **What are you doing for your high school reunion?**

Are you responsible for planning your class reunion? If so, send us the itinerary along with names of the planning committee, a list of classmates who plan to attend and a class picture. We'll publish it in a future edition of the Anaconda Leader. Drop the information off or send it to 121 Main Street in Anaconda. Or e-mail it to [leadernews@anacondaleader.com](mailto:leadernews@anacondaleader.com). Please include contact information, including a name and phone number for verification. If you have any questions, call the Leader at 563-5283.



*A rider takes flight during a motocross competition at the Anaconda Motocross Track off Lost Creek Road. For more information, call 406-563-3749. Leader photo by Paul Johns*



*Elves pose with youngsters in front of the Christmas Tree at the annual Gingerbread House Decorating Workshop sponsored by First Montana Bank, which is in the former location of the Daly Bank that was established by the town's founder Marcus Daly. The inside of the bank has been restored to its original splendor and is at the corner of Main Street and Park Avenue. Leader photo by Kathie R. Miller*



## **ANACONDA LIQUOR STORE**

*Finest selection of packaged liquor in Anaconda, featuring top shelf brands, wines, mixes and accessories.*

**—We Sell Cigars—**

**563-5721  
222 W. PARK**



# *Washoe Park ballfield home to local ball clubs since 1949*

Built by the Anaconda Copper Mining Company and its workers, the Washoe Park baseball field was dedicated on Sunday, June 26, 1949.

The field was built for use by the five teams of the City Baseball League — the Elks, Mill & Smeltermen, Veterans, Eagles, and Knights of Columbus.

Most of the players were laborers on the smelter by day and local baseball heroes by night.

The City Baseball League blossomed after the return of veterans from World War II. The league first played on land near Mitchell Stadium until construction began on Washington School.

The top two teams in the league were given the honor to play in the opening game at Washoe Park.

The Elks had the number one spot, and the Mill & Smeltermen defeated V.F.W. earlier in the week in front of 1,700 fans to get the second spot.

The first game in the new field was set for June 19, but a snowstorm dumped five inches of snow in town and up to a foot at Georgetown Lake and Opportunity, forcing the first game to be postponed one week.

Prior to the first pitch, players from the two teams, the school band and the Elks band, as well as American Legion and Veterans of Foreign Wars members in full uniforms, paraded through the business district. W.E. Mitchell, manager of the Anaconda Reduction Works, pitched the first ball and his catcher was Mayor Dan McKittrick.

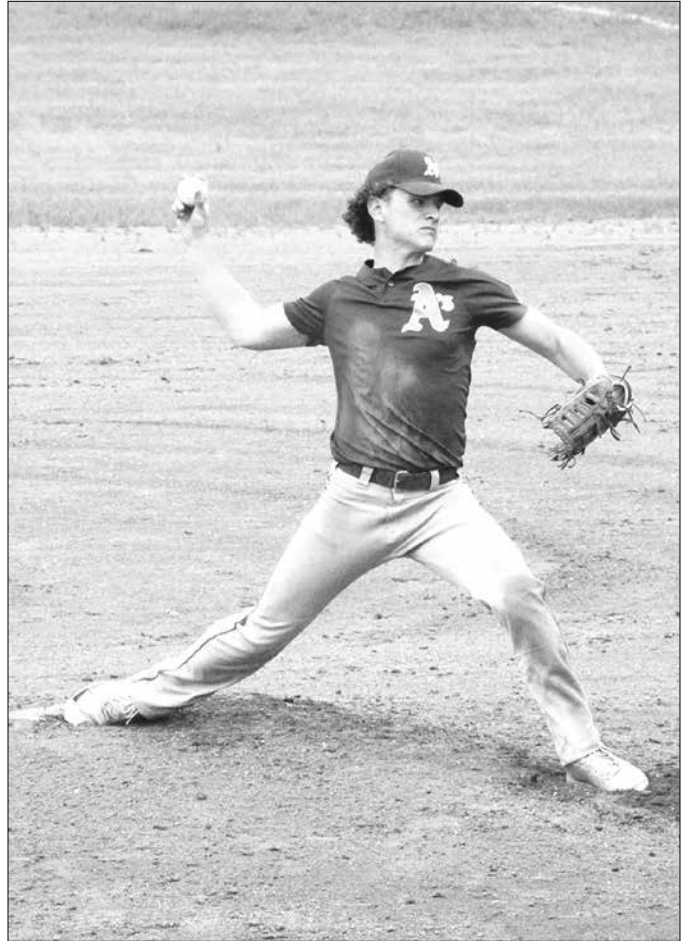
Wally “Lefty” Mehrens, pitcher for the Mill & Smeltermen, struck out a record-setting 19 batters in the game as his team upset the Elks, 5-4. The game had been tied 4-4 in the ninth inning, until Mehrens singled and drove the winning run home.

Because baseball was so popular in Anaconda at the time, the grandstand was built to accommodate 1,400 fans, and the total seating could be raised to 4,200 with portable bleachers along the baselines.

The distance from home plate to the right field fence is 310, to the center field fence is 350 feet, and to the left field fence the distance is 320 feet.

Today, the field is home to the American Legion Anaconda A’s.

The ball field is also used for some Junior Little League games, as well as occasional softball tournaments during the summer, including the annual Goosetown tournament that draws more than 120 teams from across the nation. The ball field is located west of the Washoe Fish Hatchery in the heart of Washoe Park.



*An American Legion Anaconda A’s pitcher takes the mound at the Washoe Park ball field. Leader photo by Paul Johns.*

# Smeltermens Day is an Anaconda original

## *Stack tours, brewfest, parade headline August event*

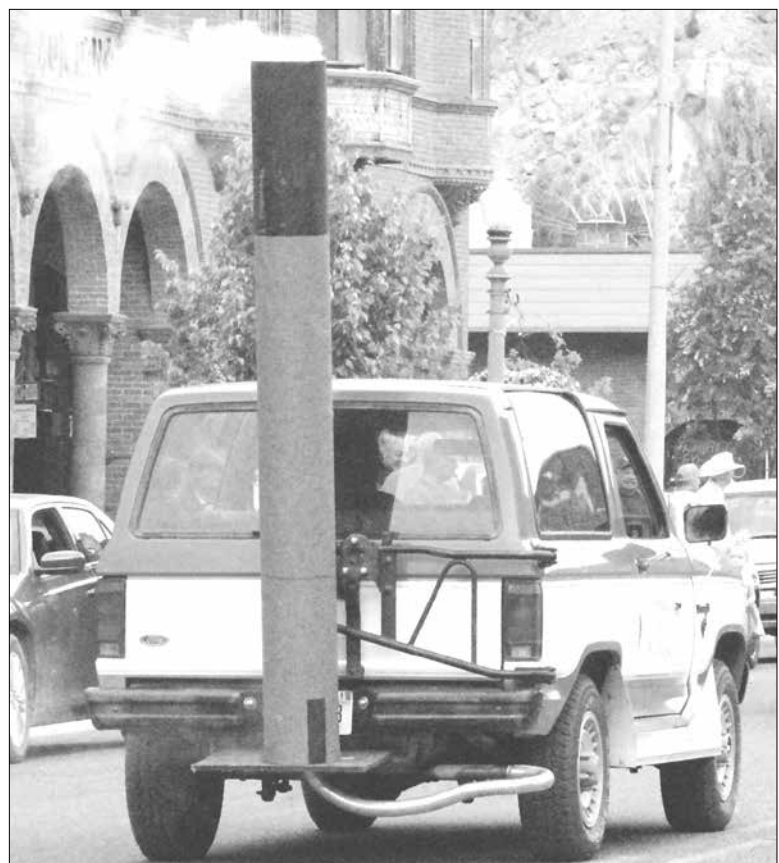
Smeltermens Day is Anaconda's celebration of its industrial past.

Originally Smeltermen's Union Day, the holiday was traditionally celebrated on Aug. 8 and in years past the children of Anaconda counted on getting a silver dollar and a bag of goodies from the smelter workers in exchange for participating in the Smeltermen's Day Parade.

While those silver dollars are now a thing of the past, the parade saw a resurgence in 2018 coinciding with the Smelter Stack's centennial, and has grown into a full-on fun-filled weekend that includes an art walk, community run or walk, brewfest and of course the parade.

The Smeltermens Day activities for 2022 kick off Friday, Aug. 4 with the Sidewalk Sale in the downtown area followed by an artwalk hosted by downtown businesses. The weekend celebration gets into high gear on Saturday, Aug. 5 with the Smelter City Scamper at Kennedy Common, followed by the Smeltermen's Brewfest featuring breweries as well as live music and food vendors. Saturday is also the day when the popular bus tours of the Smelter Stack site. Tours start at the Smelter Stack State Park at 100 Smelter Rd. on Anaconda's east side. Float decoration also starts on Saturday ahead of the big day, Sunday, Aug. 6 with the Smeltermens Day Parade and Children's Fair. Bus tours of the stack continue on Sunday as well. Starting times for each event are listed on Page 7 of this tour guide.

For more information, call Discover Anaconda at 563-2400.



*Top: Smelter City Brewery owner Luke Carlson pours a beer at the Smeltermen's Brewfest. Above: The Smeltermen's Day Parade brings out the creativity in many residents. Leader photos by James S. Rosien*

# *Blue Eyed Nellie Wildlife Mgmt. Area is home to bighorn sheep*

Rocky Mountain bighorn sheep can be found in abundance at Fish, Wildlife & Park's Blue Eyed Nellie Wildlife Management Area west of Anaconda, which includes a trail for hiking, biking and horseback riding.

The Blue Eyed Nellie also is home to mule and white tailed deer, spruce and ruffed grouse and black bear.

From Anaconda drive 4 miles west on west on Montana Highway 1 West and turn right (north) on Lime Quarry Road. The Blue Eyed Nellie is off Cable Road adjacent to the Lime Quarry.



*Bighorn sheep dine at the Blue Eyed Nellie Wildlife Management area west of Anaconda. Leader photo by James S. Rosien*



# Chapel offers spectacular views

St. Timothy Memorial Chapel at Southern Cross holds regular summer worship services on Sundays at 11 a.m. and hosts a popular summer music series. The chapel also is open daily.

Dedicated in 1965, the chapel was built by Mr. and Mrs. John Bowman in memory of their son, Timothy Dillon Bowman, who was studying to become a Presbyterian minister when he lost his life in a 1956 automobile accident.

Constructed of native stone with generous areas of glass, both clear and stained, the chapel lifts its Celtic Cross from a hillside 600 feet above Georgetown Lake. The sanctuary windows at 7,000 feet altitude overlook Georgetown Lake and afford a full view of the Anaconda Pintler Wilderness area beyond, the Continental Divide and peaks more than 10,000 feet high.

Southern Cross was once a bustling mining camp which was served by the Butte, Anaconda & Pacific Railway out of Anaconda. Only a few abandoned buildings, raptors on the wing and St. Timothy Chapel keep the place on the map today. For more information, visit St. Timothy's Web site at [www.st-timothys-chapel.org](http://www.st-timothys-chapel.org).



St. Timothy's Memorial Chapel above Georgetown Lake at Southern Cross. Leader photo by James S. Rosien

## HICKORY HOUSE INN

*a charming Bed & Breakfast located in the heart of historical downtown*



- Stay in one of our 5 guest rooms, each featuring a private bathroom
- Pet Friendly
- Stay & Play packages available



**HICKORY HOUSE INN**

[www.HickoryHouseMT.com](http://www.HickoryHouseMT.com)

218 East Park • Anaconda  
(406) 563-5481



# DONIVAN'S

## RESTAURANT

### 585' PUB & CASINO

Now  
Open Late  
Friday  
&  
Saturday

211 EAST PARK AVENUE • ANACONDA, MT • 563-6241



**SERVING  
BREAKFAST,  
LUNCH  
& DINNER**

**IN THE HEART  
OF  
DOWNTOWN  
ANACONDA!**

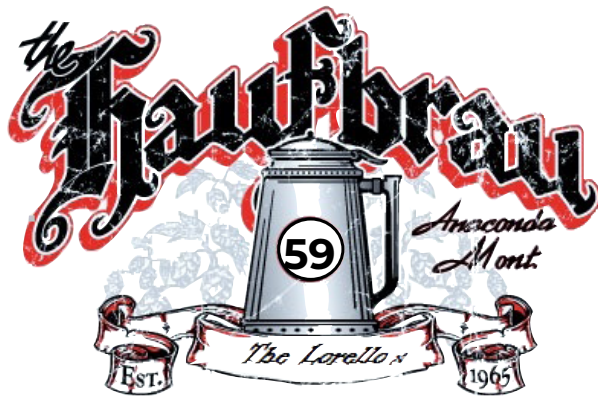




# Start your engines!



The Lost Creek Raceway, two miles east of Anaconda, features drag races all summer long. Everyone from kids in mini-racers to stock, street rods to full-blown dragsters to pickups and snowmobiles compete. Call 406-491-0403 or check their Web site at [www.lostcreek-raceway.com](http://www.lostcreek-raceway.com) for information.



- Pizza
- Steaks
- Sandwiches
- Chicken
- Beer & Cocktails
- Orders to Go
- Large Area Seating
- Arcade Room

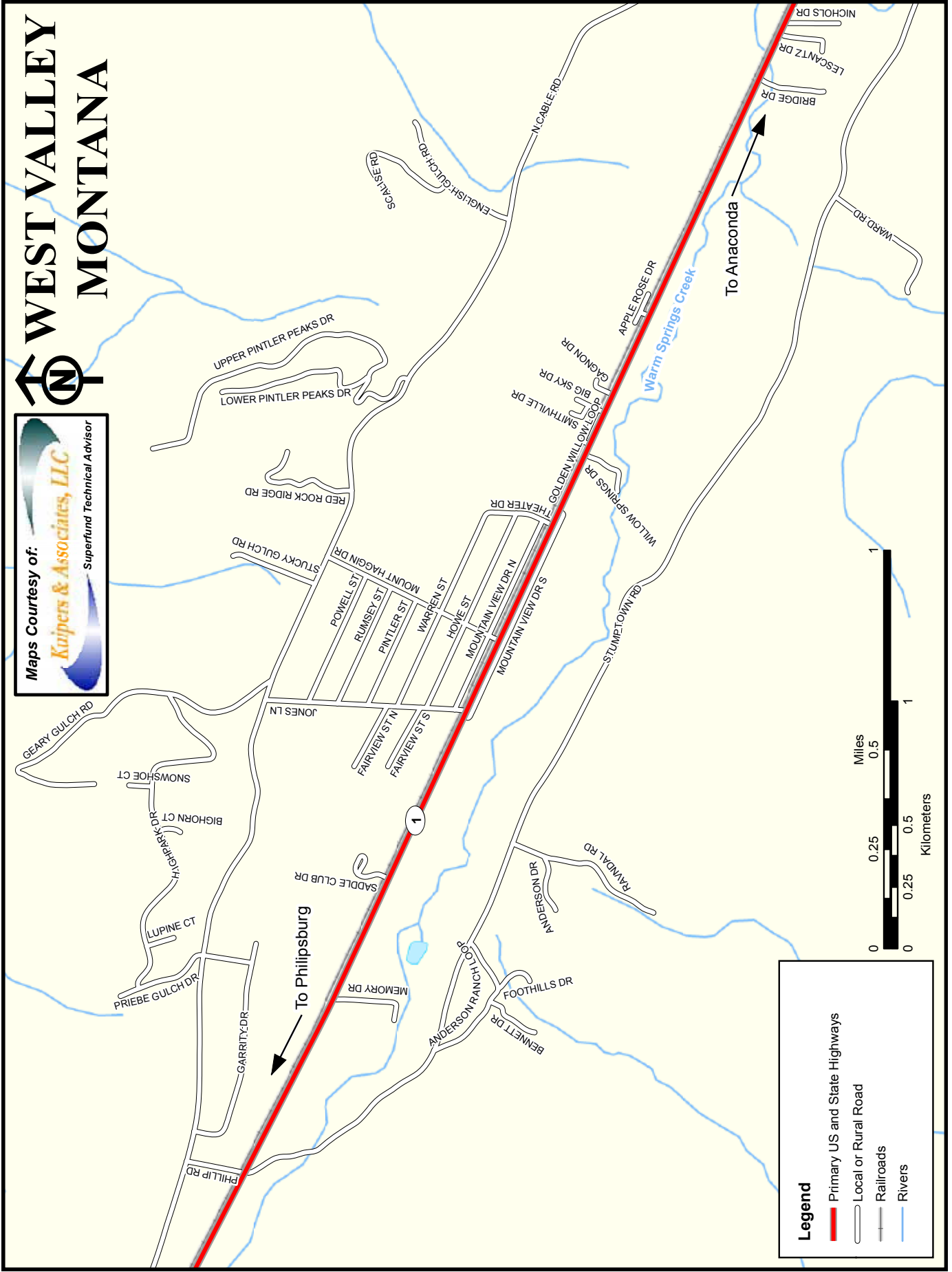
West of Anaconda • 563-9982 • [www.haufbrau.com](http://www.haufbrau.com)



# WEST VALLEY MONTANA



Maps Courtesy of:  
**Krupers & Associates, LLC**  
Superfund Technical Advisor



## *The Anaconda Saddle Club was founded in 1944*

The Anaconda Saddle Club, located at 2704 Montana Highway 1, was founded in 1944 during World War II as an extension of equestrian activities Marcus Daly brought to the valley.

With 160 members, the club constructed the racetrack with three lanes, barns, and an arena every evening on Sundays until it was completed. By 1946, it was ready for the public opening.

There is an octagonal clubhouse, which is one of the most unique structures in the valley.

Currently there are 52 barns on the property, with some of the very first barns ever constructed still available for club members to use.

Members own their own barns by purchasing them like real estate and not all the barns are used year-round.

Mares go out on odd days and geldings go out on even days to prevent breeding. Currently there are no stallions on the grounds due to increased responsibilities to care for them in the barns.

Once a club member buys a barn, it is their

responsibility to take care of it. Each barn goes for \$1,000 apiece and to be a member there is a \$150 initiation fee along with \$100 a year dues along with \$150 a year for barn fees.

Members get use of the grounds, the arena and the pasture included in their membership.

There are numerous events that are held at the Anaconda Saddle Club such as pole bending, cowboy polo, and clinics.

The Anaconda Saddle Club preserves equestrian activities and the community's interest in horsemanship although resources were scarce when it was founded.

Not only does it preserve horsemanship, it also promotes members and horse riders to showcase their skills at competitions and horse shows.

This summer, the Anaconda Saddle Club will host a District 2 O-mok-see.

Anyone in District 2 will compete in groups and acquire points with prizes handed out at the end of the year.

Proudly Crafted in Anaconda, Montana

# SMELTER



# CITY

# BREWING

101 Main Street Open Daily 563-0344

# Historic foundry still at work after 100 years

Hidden behind several blocks of houses on the east end of Anaconda is an historical and unique example of a 19th century industry still in operation today, the foundry.

The foundry, now owned by AFFCO Inc., was constructed with funds provided by Marcus Daly. Originally it was known as Tuttle Manufacturing and Supply Company.

The complex was built in 1889 and absorbed by the Anaconda Company as the Foundry Department in 1896.

The foundry cast hardware for railroad and mining-related equipment made of brass and iron.

Today, the foundry operates under the private management and ownership of AFFCO.

In addition to the foundry, there are several ancillary buildings and the entire complex maintains much of its 19th century character.

Especially impressive is the pattern storage building, which houses a collection of thousands of wooden patterns for thousands of architectural and industrial castings — some dating back to the 1880s.

Among them are the original patterns for Anaconda's unique antique streetlight posts, visible in most of the city.



*You'll find Victorian hitching posts throughout town.*

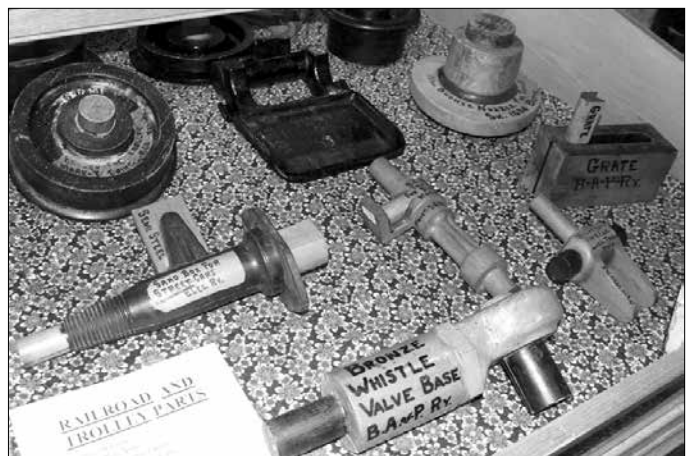


*AFFCO's railroad and mining patterns made for a great exhibit at Copper Village Museum and Art Center. AFFCO has most of its original patterns dating back to the 1890s. Leader photos by James S. Rosien*



•Foundry •Fabrication •Repair  
Machine Shop

1015 E. 6th St. • Anaconda  
563-8494





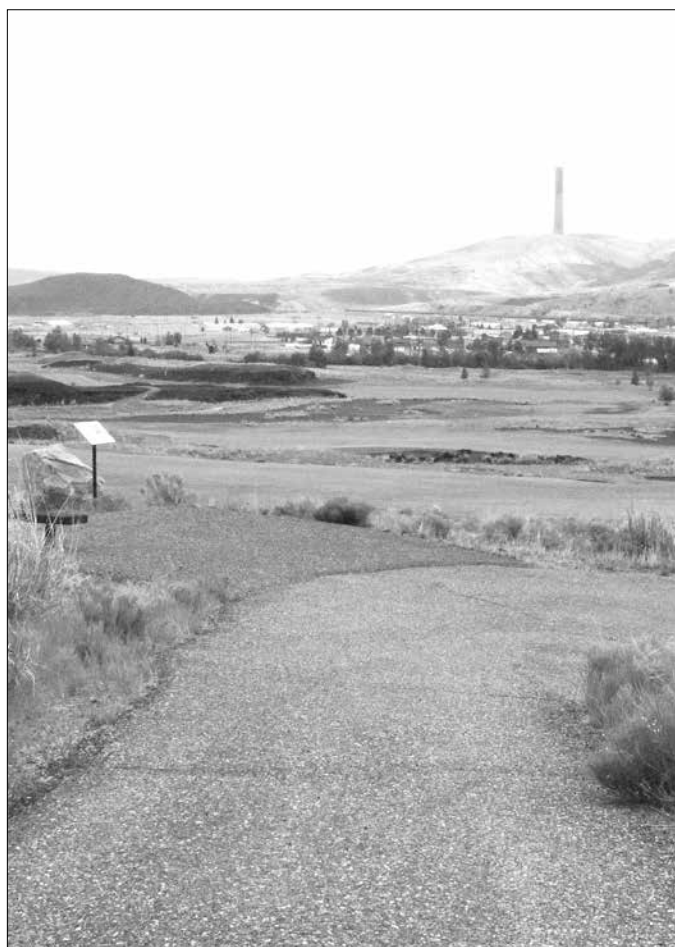
# Golf course trail traces history

Anaconda's northern flank offers reminders of Anaconda's heritage as a smelter city. For nearly a century, beginning in the mid-1880s, the smokestacks of the Industrial Age were as evident here as they were in many more populous areas of the United States.

Anaconda's first smelter was located at the base of the ridge running east and west on the north side of Warm Springs Creek. For about 15 years a sprawling complex processed the ore from Marcus Daly's mines in Butte.

Chimneys — the remnants of which are still visible — belched smoke from wood-stoked furnaces. Also visible are the stone foundations of the buildings.

Now, Anaconda is taking advantage of those historical features as part of a massive effort to clean up decades of environmental degradation.



*In addition to all the historic information you'll find along the way, the Old Works Walking Trail has a peerless view of the golf course. Leader photo by James S. Rosien*

The site of that first smelter is the location of the Old Works Golf Course designed by Jack Nicklaus. The 18-hole course is the centerpiece of ongoing Superfund cleanup. The course has been named one of the best public courses in the county and draws a steady stream of golfers to the Anaconda area.

In addition to the course, an "Old Works Historic Trail" was built to follow a high railroad grade along the slopes north of Warm Springs Creek. The paved trail offers about 40 minutes worth of walking along the old railroad grade which was once the path of trains carrying carloads of ore to the Old Works.

Along the route are signs describing the existing and former historical features which once made up the facilities of Anaconda's first copper smelter.

The trail begins and ends at a special kiosk at the north end of Cedar Street, adjacent to the west boundary of the Old Works Golf Course and the Cedar Park Lanes bowling alley.



1200 East Park  
Anaconda, Montana

(406) 563-0478  
[blackdogantique.com](http://blackdogantique.com)

*Summer Hours*  
11-5 • 7 days a week  
Memorial Day - Labor Day

Rest of Year  
11-5 • Thursday - Monday

## Anaconda treasures its courthouse

Anaconda is justly proud of the grandeur of its historic courthouse that was built in 1898. So after years of weatherization and erosion began to take its toll on the magnificent sandstone structure, county officials decided to begin restoring the historic building in 2010.

The work kicked off with a \$1.7 million restoration of the building's lantern tower, which was dismantled in July 2010. One-thousand pound casts of sandstone and fiberglass were made from the tower's decorative panels, which were then hoisted back in place beneath the century-old copper dome, in accordance with historic preservation guidelines.

Sandstone from the original panels was crushed and reused in the new casts and windows were installed in the lantern tower, which was originally built without them, to keep water and pigeons out. Renovations were completed about a year later with lights placed on the roof to shine upon the tower for special occasions.

Restoration of the courthouse will continue as funds become available. But in the mean time, it is still a "must see" for visitors, who will be struck by the carefully maintained grandeur of the structure and the attention that has been paid to maintaining its historical and architectural integrity. The building is open to the public during regular business hours Monday through Friday and is well worth the time it takes to look around.

The following published in the Anaconda Standard on Feb. 11, 1900, describes in detail the construction of the building and its fixtures:

"Before the snows of winter have disappeared, Deer Lodge County will be occupying its handsome new courthouse, which stands at the head of Main Street in Anaconda. A noble, gray stone pile it is, flanked on the east by a commodious and comfortable two story building which will be used as the sheriff's residence and jail.

"Complete in every detail is the jail, while only the finishing touches and the frescoing and decorating of walls and ceilings remain to be done



*Lights shine upon the \$1.7 million restoration of the Anaconda-Deer Lodge County Courthouse's lantern tower after it was completed in October 2011.*

in the courthouse.

When the two structures are turned over to the county, no county in the northwest will be better provided with buildings than Deer Lodge County.

"Ever since the citizens of the county, in 1896, voted to remove the seat from Deer Lodge, where it had been from early days to Anaconda, it has been their dream to possess a handsome courthouse. Since the move was made, the county has been occupying quarters in the City Hall. Now the dream of the citizens is about to be

realized.

"It was in 1897 when the movement to erect the new courthouse in Anaconda took definite form. Then the county purchased for the purpose Block 125 and the fractional Block 127 at the southern extremity of Main Street. The purchase price was \$8,000.

"It would be hard to find a more suitable site in Anaconda.

"From the business part of the city, Main Street rises on a gentle slope to the commanding spot on which the courthouse is located.

"It was the idea of the County Clerk Martin to have the courthouse set directly at the head of the street rather than in the center of the block.

"The street was condemned for the purpose, so the courthouse now looks down upon Main Street and is in full view from every part of that thoroughfare as well as from all over the city. A stranger visiting Anaconda has no need to ask where the courthouse is.

"On Jan. 25, 1898, the people voted the \$100,000 courthouse bonds by a vote of three to one.

"June 15, of the same year the contract for the work was signed with Dolan & Hamill of this city. The contractors began work at once and are about through with their undertaking. The original contract price for the courthouse and jail was \$96,750, but additions and changes have been made which bring the price, as now estimated, up to \$100,539.50.

"In addition to this, the following contracts, in connection with the work, have been let and nearly all completed: jail cells and iron work, \$5,327.50; sewer, \$627; electrical fixtures, \$1,360; linoleum and carpets, \$1,800; furniture, \$6,404; frescoing and decoration, \$1,900.

"The plans on which the new courthouse has been erected are not entirely new. They have been used in several parts of the United States, being adopted because of their many admirable qualities. For a county of the size of Deer Lodge, they are deemed as near perfect as possible.

The exterior is beautiful, dignified and graceful, while the arrangement of the interior is both convenient and artistic. In choosing the plans from a number of designs submitted in competition, the board of county commissioners

was guided by the unanimous choice of a jury of citizens called in to assist in making the award.

"Stone has been used entirely in the construction of the walls of the new courthouse. Granite is used to the water table and from there on up the material is sandstone.

In height, the building is 110 feet from grade to top of dome. Its length is 104 feet, its depth 70 feet and its height from grade to cornice line is 35 feet.

"The entrance is through a handsome arch flanked with granite columns. Passing the entrance one faces the main stairway to the first or principal floor.

"On either side of the approach to the stairway are the offices of the county attorney, the superintendent of schools, the public administrator and the coroner, beside the large public reception or waiting room and the usual toilet convenience.

"From the grand entrance and also from the rotunda, are two broad stairways leading to the first or principal floor. Upon ascending these, one lands in a spacious, well-lighted rotunda, with a 12-foot corridor leading in each direction.

"On this floor the entire west half of the building is given to the clerk and recorder, county commissioners and county treasurer, all of whom are in direct communications with each other, while in the east end are located the clerk of the court, county assessor and county auditor, thus putting all of the different county offices which are directly connected with the business of the county on the same floor.

"The Clerk of the Court is directly connected with the court from above by a spiral stairway and to obviate the necessity of carrying his books up and down, a dumbwaiter, capable of carrying 50 pounds, has been provided, upon which he may send them up and down at pleasure.

"From the rotunda on this floor starts the grand stairway to the second floor, which contains the courtroom, clerk's work room, court reporter, Judge's chambers, petit jury room and bailiff's room, witness room, county surveyor and public toilets for both ladies and gentlemen.

"The courtroom is spacious, well-lighted and thoroughly ventilated and has two entrances, one





*The Christmas lights on the Anaconda-Deer Lodge County Courthouse are a popular sight during the holidays.*

for the public and one for the bar and jury.

“In the center of the rotunda, on the second floor, is a large well hole, 14 feet in diameter, which is encircled by a very handsome ornamental balustrade.

“The finishing of the dome above this well hole is designed to give as pleasing and handsome effect from the first and second floors as possible. It is finished in dome shape, surmounted by a large ceiling light of art glass of rich coloring and design, which by day will be illuminated by the exterior light and at night by means of electric lights.

“At the base of this dome and on top of the cornice, a clever arrangement of electric lamps light the dome thoroughly, while around the ornamental balustrade many incandescent lights add their luster to the general effect.

“There is a stairway leading to the attic and from the attic there are stairways to the different stories of the tower.

“In all corridors, rotunda and up the grand stairway, there is a marble wainscot three feet high with cap and base. The treads of the stairs are marble.

“All the walls and the ceiling of the courtroom

are being frescoed and tinted. In the rotunda, there are to be several designs on the walls, including the state seal.

“The hardware of the building is what is known as the old copper finish.

“Espesial pains have been taken with the ventilation of the building. It is accomplished by vent flues, which are connected to every room. In each of the flues will be 10 feet of radiation to heat the same and cause an upward draft. The flues are taken into the attic, which is thoroughly ventilated by two large ventilators. The fresh air is admitted to openings in the wall and directly opposite certain radiators, these radiators having a case base and one directly connected with the fresh air openings.

“The electric light fixtures are beautiful in the extreme ... are of the choicest designs and contribute not a little to the beauty of the interior.

“In point of furnishings, the courthouse will be equal to any office building in the country. The judge’s bench, chairs, tables and other articles throughout the building are rich and heavy in design and in keeping with the dignity of the surroundings. Counters, rails and other fixtures are of the same general type.”

---



*Inside Anaconda-Deer Lodge County's Courthouse you'll find the original wood work, marble and granite from when it was built in 1900. In the center of the second-floor rotunda is a 14-foot diameter hole encircled by an ornamental balustrade. Directly above is a dome ceiling equipped with a large hanging light of colored art glass. It's a must-see for visitors.*



# EVERETT COOK

==== LAW ====

- Personal Injury
- Workers' Compensation
- Car Accident & Motorcycle Accident Injuries
- Social Security Disability
- Insurance Disputes & Bad Faith
- Consumer Protection
- Wills, Trusts & Estates
- Wrongful Death



Bernard J. "Ben" Everett



J. Ben Everett



Adam Cook

217 EAST PARK STREET • PO Box 969  
TELEPHONE (406) 563-5005 • FAX (406) 563-0380



## Copper Village Museum & Arts Center

401 East Commercial • Anaconda, MT

406-563-2422

For Updated Info and other events check us out at [www.cvmac.org](http://www.cvmac.org) and our Facebook page!



### 2023 Schedule of Events

Join Us For Our 43rd annual

## Art In Washoe Park!

**July 21, 22 & 23, 2023**

Southwest Montana's best Arts & Music Festival  
Three days of great

Arts and Crafts, Delicious Food,  
and World Class Entertainment



Join Us For The

## Anaconda Wildlife Art Expo

**Downtown**

**Anaconda, Montana**  
**September 22, 23 & 24, 2023**

More Information:  
**(406) 560-3416**

all proceeds to benefit Copper Village Museum & Arts Center

Featured artist: Cynthia Fisher



# Car & Bike Show



**July 20, 2023**  
**July 21, 2023**  
**July 22, 2023**

**Registration: \$20 • 9 a.m. - 2 p.m.**

**Pint Night at Smelter City Brewery**

**Memorial Golf Tournament at Anaconda Country Club**

**Car & Bike Show at Kennedy Common**



Ken Cook

### **Donations accepted**

Please make checks payable to ACF  
or Anaconda Community Foundation  
in the memo line add: Kenny Cook

Mail to Ken Cook

P.O. Box 82

Anaconda, MT 59711

or donate online at

[www.kennycookmemorialfund.com](http://www.kennycookmemorialfund.com)



[www.kennycookmemorialfund.com](http://www.kennycookmemorialfund.com)

For More Information contact Jim Bellandi • 406-560-2857

# Washoe Theatre

In Digital  
2-D & 3-D  
when  
Featured!

*Go out to a movie tonight!*

inside photo by Terry Vermeire, Anaconda

Call 563-6161 for  
Entertainment Announcements

*Stop by for Popcorn, Pop & Candy  
During Show Hours!*

*Open 7 Nights  
A Week!*



305 Main Street • Anaconda • [www.anacondamt.org](http://www.anacondamt.org)





# The Washoe Theatre: a classic

Anaconda is home to one of the nation's most beautiful theaters — the Washoe Theatre.

Ranked fifth in the nation among similar sites by the Smithsonian Institution, the Washoe Theatre is listed also on the National Register of Historic Places.

A walk through the majestic building helps explain why. The restrained exterior of the building gives little indication of lavish interior — the elaborate and original Art Deco furnishings, light fixtures, beautiful silver, copper and gold leaf, and ceiling and wall murals.

Murals decorate the hallways, which are lighted with elegant light fixtures. At the turn of the stairs to the mezzanine is a modernistic mural entitled “Nocturne.” Deep carpet covers the stairs and second floor.

But it is inside the theater auditorium itself where visitors often simply stop and gaze. Among the 1,000-seat theater's visual splendors are: hand-painted curtains and backdrops of turquoise, gold and red; mosaic murals; hand-carved rams heads lining the ceiling. On the dome is a mural in pastel shades of rose, powder blue and yellow entitled “Montana,” which depicts the dependence of modern civilization on copper.

Around the stage the pilasters and proscenium are decorated in eight shades of gold and accented in copper leaf. The hand-painted curtain depicts rearing deer in gold and red against a turquoise background. The original backdrop curtain was in disrepair, and in 1990 was replaced with a copy that was designed to be as close to the original backdrop as possible.

The theater's history is as rich as its decor.

The Washoe Theater was designed by B. Marcus Priteca, Seattle architect. He also designed the Coliseum Theater in Seattle in 1916.

The Washoe stands on the site of the old Margaret Theater, built in 1896, and named after Marcus Daly's wife. Purchased by the Washoe Amusement Co. in 1927, the Margaret was destroyed by fire during the winter of 1929.

Plans were immediately made to construct the Washoe, but due to the Depression, it did not open until 1936. The theater was constructed at a cost of \$200,000.

The Washoe Theatre opened during a period when movies were at their peak as an entertainment medium. Huge, elaborate movie palaces were built to show the films. Many of these theaters have been destroyed, but the Washoe still stands and is in operation, fulfilling its original function.

And the movies there still feature an intermission and ticket prices of yesteryear.

- LOCAL NEWS
- REAL ESTATE



- SPECIAL EVENTS
- ENTERTAINMENT
- LOCAL EVENTS

**A GIFT THAT LASTS ALL YEAR...**

Name \_\_\_\_\_

Address \_\_\_\_\_

City & Zip \_\_\_\_\_

Phone \_\_\_\_\_

- 1 YEAR IN-COUNTY .....\$61.00
- 1 YEAR OUT-OF-COUNTY.....\$78.00
- 1 YEAR OUT-OF-STATE .....\$85.00
- ONLINE ONLY .....\$61.00

121 MAIN ST. ANACONDA, MT 59711  
(406) 563-5283

Email: [leadernews@anacondaleader.com](mailto:leadernews@anacondaleader.com)  
[advertising@anacondaleader.com](mailto:advertising@anacondaleader.com)

**[www.anacondaleader.com](http://www.anacondaleader.com)**



# Lorry Thomas Wildlife Area at Hefner's Dam

One of Anaconda's newest recreation sites is the Lorry Thomas Wildlife Area at Hefner's Dam, which is named in honor of the late sportsman who spent his life advocating for access to public lands and streams throughout Big Sky Country.

The old pump house building, which is about three-quarters of a mile west of Washoe Park off North Cable Road, has historical information about the Anaconda Company's use of the dam and how Mother Nature took over when smelting operations were shut down in the mid-1980s.

An eight-foot-wide, handicap-accessible gravel trail connects the pump house and metal bridge crossing Warm Springs Creek to the wetland area at Hefner's Dam about a half-mile away.

The trail also runs in the easterly direction to a trailhead on the western edge of Washoe Park and continues to the duck pond. The Anaconda Job Corps installed 14 benches along the length of the trail, which is about a mile long from Washoe Park to Hefner's Dam.



*The old pump house building about three-quarters of a mile west of Washoe Park off North Cable Road is the entrance to the trail to the wetland at Hefner's Dam. Leader photo by Kathie R. Miller*



Master Electrician

**COMMERCIAL • INDUSTRIAL • RESIDENTIAL**

Licensed and Insured

103 Harrison • ANACONDA  
Serving Anaconda and Surrounding Communities  
**Toll-Free 1-800-294-8021**



# *Sports complex is state of the art*

Anaconda's newest and largest sports center is the Charlotte Yeoman Martin Sports Complex, located north of Ace Hardware on the east end of Anaconda.

The sports complex is a six-field, wagon wheel style softball complex with four baby-hoop backstops encircling the centrally located, two-story concession facility.

The six fields and the quarter-million dollar-plus concession facility are the culmination of a softball dream for former Parks and Recreation Department director Bill Hill, the central force behind the complex.

Hill began the planning stages of the project in 1984, and construction began three years later. In August of 1992, the Charlotte Yeoman Martin Foundation of Spokane awarded the Parks and Recreation Department a grant of \$263,746 to build the facility.

The grant earmarked \$199,746 for materials and another \$64,000 for labor.

Yeoman Martin was an Anaconda native and the sister of longtime insurance agent Bill Yeoman.

The fact that Yeoman Martin was from Anaconda played a large part in awarding the grant by the five-member managing committee of the foundation.

The concession facility houses lockers and showers, an umpire's room, office space, restrooms, a dining area, and concessions.

The top of the structure features a 6,000-square-foot deck as well as a second concession area.

While designing the project, Hill studied dozens of other softball complexes in the United States and incorporated the best ideas into the CYM Sports Complex.

Plans also call for adding lights to the fields.

The sports complex is the site of youth and adult softball tournaments nearly every weekend of the summer.

The fields also are used for grade school and junior high football programs in the fall.

Stop by and take in a game or two while you're in town.



*A batter takes a big swing at the Charlotte Yeoman Martin Sports Complex on Anaconda's east side. Leader photo by Paul Johns*

# A Jack Nicklaus golf course offers tribute to the Old Works

Late May 1994 — Sunny skies, troops of school children and a sea of smiling faces greeted golf’s “Golden Bear” as he led local and federal officials in turning the symbolic “first shovel” at the site of Anaconda’s Old Works Golf Course.

Golf legend Jack Nicklaus, designer of the new golf course, was joined by city-county, Atlantic Richfield (then ARCo) and EPA officials in scooping and tossing five shovels-full of earth. In what some consider to be the most important positive development for Anaconda since the Washoe Smelter was built more than a century ago — and the most significant happening since that same smelter closed in 1980 — construction of the new golf course began as a symbol of new possibilities. Hundreds of Anacondans attended, cheering and applauding.

The course is an integral part of the Anaconda-Deer Lodge County’s economic revival. Designer Nicklaus met exacting design criteria, in large part because the course served also as an innovative remedy for a federal Superfund site. The golf course was built atop the contaminated wastes left by the Old Works copper smelters.

He met another criteria: tying the Old Works Golf Course into the history of Anaconda.

A part of that history connection is the use of 14,000 cubic yards of black slag, from the slag piles — probably the most commanding sight to newcomers entering Anaconda from the east — to cover 17.5 acres. Another is the preservation of 72 acres of native grasses.

To build the subgrade for the course, 600,000 cubic yards of earth were moved. On top of that was placed 700,000 cubic yards of earth to form a protective cap above which the actual course was laid out. Beyond the initial earthwork, which involved moving approximately 1.3 million cubic yards of dirt, the statistics regarding the new landscape are impressive on their own merits.

The course features a state-of-the-art irrigation system designed to reuse water stored in two catch basins, or lakes, thereby protecting the pristine waters of Warm Springs Creek from runoff.

The course opened in 1997 and has received national media attention both because of its unique beginnings, but also because of the quality of its play and the value it provides as a public golf course.

What began as the idea of Anaconda resident Gene Vuckovich, gathered enough steam to convince the ARCo to conduct a study to see just how feasible a golf course might be as a remedy for the Old Works site. Over time, scoffers turned to duffers — pleasantly surprised and, in some cases, humbled by the course’s success.

The Old Works has undertaken a significant renovation of the clubhouse, including golf simulators as well as a new bar and patio with fire pits, aiming to turn the course into a year-round recreation destination.





## Washoe Park Fish Hatchery will hook you

The public is invited to tour the visitors' center at the state's Washoe Park Trout Hatchery.

The center features an interpretive live trout display, designed to give viewers a better understanding of the Montana fish hatchery system and live habitat.

The display includes a living trout stream that skirts the building and can be observed from both inside and outside of the visitor's center.

The flow-through stream is fed by well water that circulates around the building and passes by a wall of glass in an indoor viewing area. There, spectators can see trout in their natural state.

Other displays include a replica of an early day hatchery office and pre-1920 photographs of the Anaconda hatchery.

The life-cycle of a trout is depicted in a separate viewing area, with a window opening to the hatchery tank room, which houses 28 fish tanks, which are used to hatch trout eggs and raise the fish to the fingerling stage — about three or four inches in length.

The visitor's center also features a taxidermy display which depicts local wildlife such as black bear, big horn sheep, various birds and small mammals.

The Anaconda Copper Mining Co. built the 4-acre facility in 1907 on property donated by the Butte, Anaconda & Pacific Railway. It was Montana's first state fish hatchery, which opened in 1908 and has operated continuously since.

The hatchery produces over one million eggs per year. About 200,000 of these are kept at the facility for future brood and production fish that will be planted in lakes across Montana to support recreational sport fishing. Eggs and fish from Washoe Park Trout Hatchery are also used for restoration stocking as part of Montana's westslope cutthroat trout conservation program.

The hatchery's visitors center at 600 W. Pennsylvania Ave. is open 8 a.m. to 5 p.m. daily. The outside



*Every year Washoe Park Trout Hatchery plants mountain lakes with thousands of fish. Learn about the Westslope cutthroat in the Fish Hatchery's exhibit room or ask one of the biologists on site for a tour of the facility. Leader photo by Kathie R. Miller*

viewing pond is open from sunup to sundown and fish food can be purchased for 25 cents to feed the fish.

For more information about the state fish hatchery in Anaconda, call 406-563-2531.



*Washoe Park Fish Hatchery employees manipulate a rainbow trout during the spawning season. The hatchery annually ships about 1.2 million rainbow trout eggs, 1.1 million westslope cutthroat eggs and raises about 120,000 westslope cutthroat and 120,000 rainbows. Leader photo by James S. Rosien*

# Wildlife Art Expo brings artists downtown

The Anaconda Wildlife Art Expo, which started in 2000 and ran for eight years until the recession hit and shut it down, came back in 2021 and will take place Friday through Sunday, Sept. 22-24 at businesses throughout the downtown area.

For the first few years of the Art Expo, the proceeds were donated or were used as scholarships and given to a student, someone that was picked every year, to study fish and wildlife biology. Part of the proceeds was also donated to help purchase habitats.

Now, the Expo is a fundraiser and the proceeds will go to help Copper Village Museum and Art Center.

Artists from the local area and other parts of the country have been invited to showcase their paintings, drawings, sculpture and other media that falls under the category of fine art. Previously, artists showcased art solely focused on wildlife, but now artists will showcase different types of art including landscapes.



*The Anaconda Wildlife Art Expo is a great opportunity to see the nature and wildlife art of local artists as well as artists from other parts of the country. Leader photo by James S. Rosien*

On the first night of the Art Expo, there will be an “artist meet and greet” evening reception at Copper Village at 401 E. Commercial Ave.

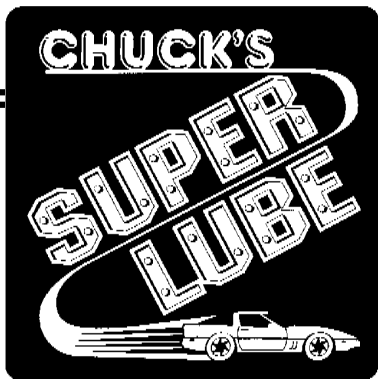
There will be drinks and hors d’oeuvres bought from different restaurants on the first night and then there will be several different venues at local businesses in the downtown area so people can go from one venue to the next to see the different artists.

On Saturday night, there will be a wild-game feed for the public held at The Elks on the 200 block of Main Street, with a variety of different wild foods to try. The menu will be subject to the availability of game and fish. The evening’s festivities will also include live music and a live auction. All the proceeds will go to Copper Village.

Art will be displayed at downtown businesses throughout the weekend.

The Art Expo is a great way to showcase local artists and artists from different areas around Montana as well as for the public to enjoy a fun and inviting atmosphere surrounding art.

For more information, call Copper Village Museum and Art Center at (406) 563-2422 or check out their website, [www.cvmac.org](http://www.cvmac.org).



1350 East Commerical • (406) 563-3282

Complete Oil & Lube Service

Open Mon. - Fri. 9-5:00

FROM CLASSICS TO BRAND NEW,  
WE CAN SERVICE YOUR VEHICLE!

**We Sell & Install Most Air Filters,  
Wiper Blades, Serpentine Belts,  
Headlight Bulbs  
& Diesel Fuel Filters**



Mobil 1





Georgetown Lake, off Montana Highway 1 about 16 miles west of Anaconda, is a prime recreation site. Leader photo by James S. Rosien



## *Metcalf* Senior Citizen Center

115 E Pennsylvania | 563.3504

### **Regular Lineup**

- **Lunch Served - Mon. - Fri. noon. No reservation required.**
- **Meals On Wheels - Delivered to qualified seniors Mon.-Fri.**
- **Commodity Supplemental Food Program: available to qualified seniors. Call 563-3504 for information.**
- **Senior Shopping - Every Thurs., 1:00pm Call Tues. to be picked up on the bus. Once a month bus goes to Butte. Call for more information.**
- **Transportation Service - Provided to seniors to and from the Metcalf Center for lunch and special events.**
- **Pinochle - Every Tues & Wed., 1pm**
- **Bingo - Every First & Third Thurs., 1pm**
- **Everyday Activities - Billiards, puzzles, etc. from 8am to 3pm**
- **Durable Medical Equipment Loaner Closet: walkers, canes, crutches, wheel chairs, etc. are available for your use with no charge.**
- **Veteran Services: 1st Wed. of the month, Dave Williamson, Veterans Service Officer at Metcalf Center 9am to 11am No appt. necessary**





lynette@monere.com  
**406.560.7762**

*Discover the difference between merely moving from place to place versus finding the perfect place to call home. From the moment you first meet Lynette you feel like you have known her your entire life. Her relaxed charm and contagious enthusiasm immediately puts you at ease in any situation.*

*To Lynette your property represents comfort, caring, belonging and of course security. A place you can come home to at night and feel perfectly warm and be yourself.*

*That's why she takes the extra steps necessary to ensure you find your perfect property!*

**Lynette Foulger**  
broker/owner

*Before joining the Team of Montana One Real Estate as a Licensed Agent, Denise Paszkowski was a co- owner of a very successful Michigan-based Forestry business in a predominantly male-oriented industry. She successfully navigated this landscape and brought to her clients outstanding customer service.*

*As her accomplishments and business grew , so did her confidence and sense for adventure. In 2006, she had the opportunity to relocate from Michigan to Missoula, Montana and in 2011 she set her roots in Anaconda.*

*Denise brings with her extensive experience in Sales and Customer Relations, and the desire to continually grow and pay it forward.*

*When Denise isn't making home ownership dreams come true, she enjoys spending her time fishing, camping, cooking and spending time with her husband Bill.*



denise@monere.com  
**406-560-8030**

**Denise Paszkowski**  
realtor

**Cali Vecchio/Miller**  
realtor

*Cali Vecchio/Miller is a born and raised Montana girl. She began her journey in Kalispell with a quick stint in Missoula before finishing her school years in Frenchtown. After graduating from Frenchtown High School, she spent some time traveling and landed at beautiful Georgetown Lake about three years ago where she has settled.*

*Throughout the years Cali had been employed in the service industry where she was able to hone her skills working with the public. Cali's clients and friends often describe her as very approachable, kind, considerate, and a charismatic woman. She will listen to your requests and wishes and try her hardest to make those wishes come true. She is driven and ready to help a neighbor, coworker, or friend she has yet to meet attain their real estate*

*goals. This knowledge, coupled with great communication skills has provided her with valuable skills that she uses daily in real estate negotiations, educating home-buyers and sellers, and effectively marketing the team's listings. She enjoys spending time on the water, in the mountains and has a knack for raising plants. When looking for a real estate agent, Cali will help you find the perfect place to call home.*



cali@monere.com  
**406 546 5254**



The Ladies Ancient Order of Hibernians' Washer Women Brigade performs in Anaconda's St. Patrick's Day Parade held annually on March 17. Leader photo by James S. Rosien

# Banking Convenience **AT YOUR CONVENIENCE!**

**16 FULL SERVICE LOCATIONS**  
*to Serve You.*

**+ OVER 80 ATMs**  
*No service fees at any of these locations  
when using your Glacier Bank Visa Debit Card!*



- LIBBY
- KALISPELL (4 locations)
- LAKESIDE
- EUREKA
- WHITEFISH (2 locations)
- COLUMBIA FALLS
- BIGFORK
- POLSON
- RONAN
- ANACONDA
- BUTTE (2 locations)



[WWW.GLACIERBANK.COM](http://WWW.GLACIERBANK.COM)

MEMBER FDIC



# *Gym is memorial to veterans*

Built just a few years after the end of World War II, Anaconda's Memorial Gym is a four-story, gray concrete memorial to Deer Lodge County residents who served in the armed forces. A large bronze plaque on the interior west wall holds the names of all Anacondans who died in the Spanish American War, World War I, and World War II. It also lists everyone from Anaconda who served during World War II.

The original score boards in the gym were a memorial to Captain Joseph T. McGeever, both a World War II hero and a former Anaconda high school athlete. The men in his company contributed the largest portion of funds toward the score boards (Headquarters Company, Third Battalion, 517th Parachute Infantry). As part of the gift, a bronze plaque measuring 20 by 20 inches was installed on a concrete column in the center of the main entrance on Hickory Street. The inscription reads, "Score boards presented by men of Headquarters company, Third Battalion, 517th Parachute Infantry in memory of Capt. Joseph T. McGeever killed in action Southern France, Sept. 11, 1944."

The first game to be held in the Memorial Gym was played on Saturday evening, January 14, 1950, between the Anaconda Copperheads, state champions in 1948, and the Missoula High Spartans, state champions in 1949. The Copperheads were coached by Mike O'Leary. He had been their coach since 1935, save for the four years during World War II he served in the Navy. While holding practice in the Memorial Gym in the days before the opening game, he was quoted in the Anaconda Standard as saying, "A larger floor makes a difference in the type of play we have been accustomed to in the Daly Gym." One of the star players on that team was "Easy" Ed Kalafat, the top scorer in the Big 16 conference again that season.

The temperature that night was 18 degrees below zero but some 5,000 fans turned out in spite of the

## **PINNACLE PEAK STORAGE**



- Residential & Commercial Storage
- All Sizes of New Metal Buildings
- Covered RV storage
- Fenced & Lighted
- Low Rates & Credit Cards Accepted!
- 7-day access
- Video Surveillance

*Located on the way to  
beautiful Georgetown Lake*

# **563-6100**

**11791 Montana Hwy 1, Anaconda**



poor weather to witness the first game. Anaconda defeated Missoula, 43-29. The gym was built to seat 4,000 people, but seating for 1,000 others was arranged for the opening game.

One of the early features of the 200- by 140-foot structure was a “tanbark” room in the basement — a room on the south side of the gym with an earthen floor for indoor football practice.

In addition to being the floor where Kalafat played, the gym was also where Anaconda’s sports legend Wayne Estes competed during his high school career. Estes went on to play for Utah State where he was an All-American. He died in a tragic accident just hours after he finished a game during his senior year at Utah on Feb. 8, 1965.

The gym, located on Hickory Street between Sixth and Seventh streets, continues to be the home of both the girls’ and the boys’ Copperhead basketball teams, as well as the site of numerous special events throughout the year.

The gym has recently undergone significant renovations, including new retractable bleachers, an open viewing area of the court right off the main entrance, and a new concession area.



*The Lady Copperheads control the ball at the newly remodeled Memorial Gym. Leader photo by Paul Johns*



*The rest stop off Interstate 90 and Montana Highway 1 provides tourists with indoor amenities and outdoor picnic areas. The rest area is the first rest stop along the Pintler Veterans Memorial Scenic Route on Montana Highway 1 and is about five miles east of Anaconda. Leader photo by Kathie R. Miller*

# Wildlife flock to Warm Springs Ponds

Hunters, anglers, bird watchers and other outdoorsmen favor a “remote” area close to Anaconda and just a stone’s throw from Interstate 90.

Numerous recreational opportunities are just 20 minutes away at Warm Springs Ponds Wildlife Management Area. The area is under lease by Montana Fish, Wildlife and Parks.

Fifteen miles of trails weave through and around wetlands alive with birds. They perch and bob on rough marsh grasses, paddle silently through tranquil waters, swoop and dip through a sky resonant with their calls.

Benches and picnic areas in the valley provide a fine view of Mt. Powell in the Flint Creek Range and Mt. Haggin above Anaconda. The trail routes include interpretive signs.

ARCo, now the Atlantic Richfield Co., has constructed improvements to the area, which once served as settling ponds for the Anaconda Co. smelter. The trail system is open to hikers, bikers and horses, and the ponds are open to non-motorized water craft.

Anglers and hunters are urged to consult their regulation booklets to check when the area is open for sporting.

To access the Warm Springs Ponds recreation area, drive Highway 48 to Frontage Road, then follow left to the Warm Springs junction. Take a right and continue east on Morrell Road under Interstate 90.

To reach entrance one, two or three, bear right at the fork in the road; entrance four sits further east on Morrell. Entrances five through 10 occur at intervals along East Side Road, and can be reached by turning south where Morrell ends (about 8/10 of a mile past the I-90/Warm Springs junction), or following it north from Opportunity.

The area occupies the headwaters for the Clark Fork River, which also provides opportunities for anglers. Again, consult Montana fishing regulations before casting and make sure adults have the licenses required.



*Photos by Louis Bencze, courtesy of Atlantic Richfield Co.*

*An eagle perches and scans for prey at Warm Springs Ponds.*



*An osprey wings in for a landing, with Mt. Haggin in the distance.*



*You'll find a variety of flowers throughout the Begonia House at Washoe Park. Volunteers from the Anaconda Garden Club recently refurbished the Begonia House, which is more than 50 years old. The garden club stocks the Begonia House with colorful flowers each summer for all to see and smell. Leader photo by Kathie R. Miller*

## Practice your shot at archery range

Anaconda's Archery Range is popular with the young and old, especially leading up to hunting season.

Located about a half mile west of Washoe Park on Cable Road, it features a 12-station V-shaped target range with a cement shooting line for use by archers of all skill levels free of charge.

Half of the stations have ranges from 15 to 55 yards in odd distances while the other half from 10 to 50 yards in even distances.

In addition, two five-yard targets are located at both ends for beginning youth.

The archery range is open April through November and is handicap accessible with an outdoor bathroom available.

The Archery range was built in 2010 using funds from a Montana Fish, Wildlife & Parks grant. The Anaconda Sportsman's Club spearheaded the project.

For more information, call Anaconda-Deer Lodge County's Parks and Recreation Department at 406-563-3408.



*A man takes aim at one of the targets at a target. The public Archery Range is open from April through November and is free to the public. Leader photo by Kathie R. Miller*



MIKE KING

**For All Your Insurance Needs**

118 Cherry • Anaconda • 563-2991



# Anaconda and Daly's own railway

Anaconda visitors who are interested in the area's industrial history should drive by the former Butte, Anaconda & Pacific Railway roundhouse and yards at 900 W. Commercial Ave.

Now operated under the private ownership of Rarus Railway, the BA&P was founded in 1892 by Marcus Daly and James J. Hill, president of the Great Northern Railway, to connect the Butte mines with the Anaconda smelters.

Daly called it "the Biggest Little Railroad in the World." The 26-mile line was constructed in 1894 after Daly had grown disgusted with the freight rates being charged by the Montana Union Railway, a subsidiary of the Northern Pacific and Union Pacific lines and the first to serve Anaconda. Although it hauled passengers and freight from 1898 to 1955, the railroad was principally designed by Daly to carry the millions of tons of ore required by the Anaconda smelter.

In 1895-96, the Rocker Hill Line was constructed, providing a direct route from the Butte mines to the main line of the railroad. In 1898, the railroad was extended six miles from the Old Works Smelter to Brown's Quarry west of Anaconda. The quarry, a rich lime rock deposit, provided the flux material for the smelter process. In 1898, daily passenger and freight service were inaugurated from Stuart, which was located just east of Opportunity, to Anaconda. Another line, 7.35 miles to the new Washoe smelter, was constructed in 1903 and in 1911-12 the BA&P extended its line west of Anaconda 18 miles to Southern Cross. Called the "Sundown Limited," the new extension hauled both ore and passengers. That line was abandoned in 1925-26 when the Anaconda Company closed the mine. The old grade can still be seen near Georgetown Lake on the hill above the Brown Derby Restaurant and Bar.

In 1913, the railroad became one of the first in the United States to electrify its operation and the first to convert to 2,400 volts DC. The fleet of 30 steam locomotives was scrapped and replaced by seventeen 80-ton, 1,000-horsepower, box cab type electric locomotives.

The last passenger train ran on April 15, 1955. In 1967, the BA&P discontinued electrified locomotion in favor of diesel-electric power and on May 21, 1982, the last train of copper concentrates was hauled.

The Anaconda Company initiated abandonment proceedings in 1984, but before those were completed, the BA&P was purchased by three employees who formed a new corporation — the Rarus Railway Co., which was later purchased by Patriot.

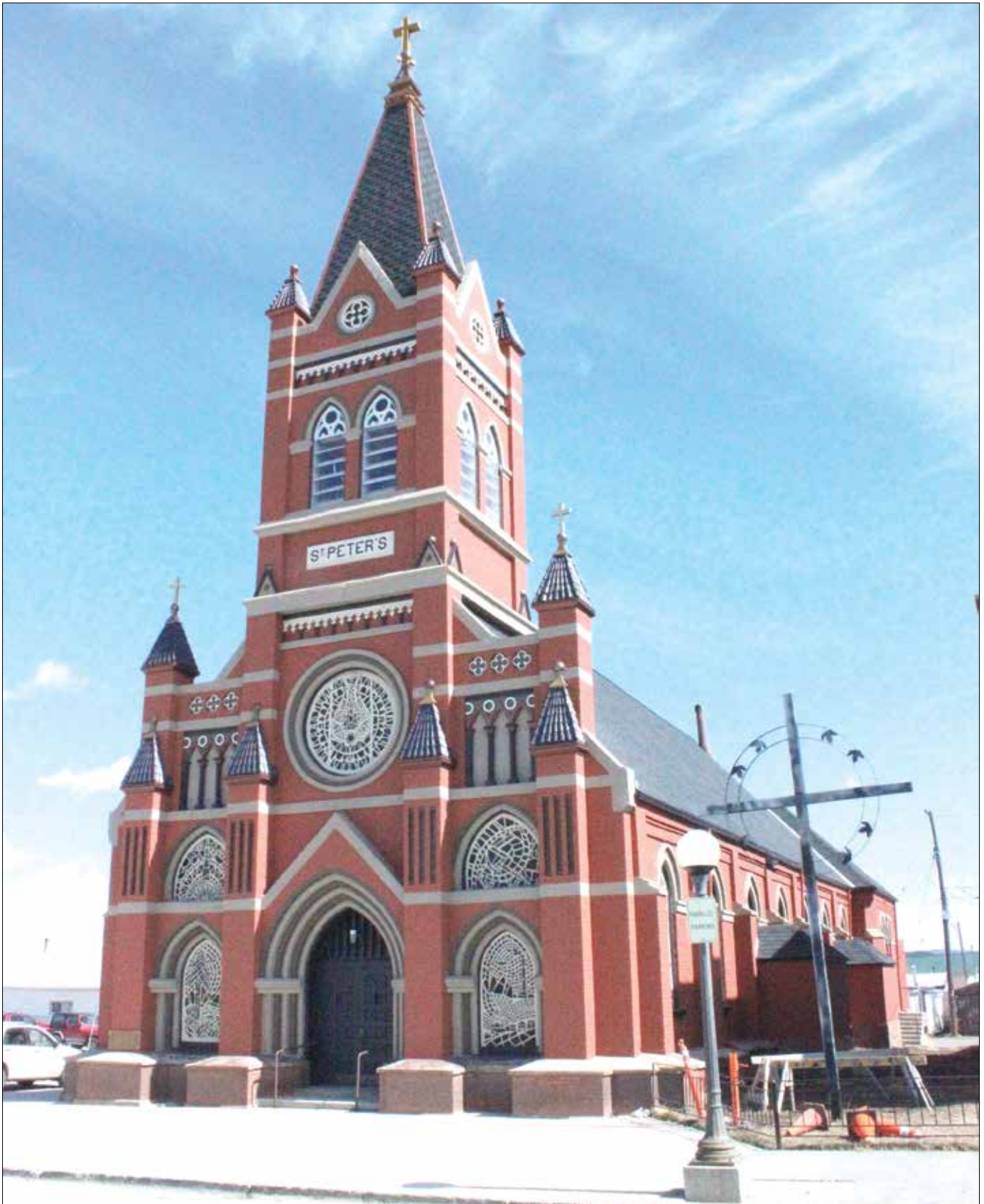
The 19th century roundhouse and shops adjacent to West Park Avenue in Anaconda are considered by some to be the best examples of their kind in the Western United States. In addition, there are two late-Victorian brick railroad depots, offices, shops and 26 miles of track which connect Butte and Anaconda. The larger of the old depots serves as the headquarters for Patriot; the other, located at the foot of Main Street, currently serves as a building supply business.

The railroad's right-of-way between the two cities passes by several historic sites and structures, skirts the broad upper Clark Fork River Valley and winds through the scenic Durant Canyon.

Officials hope the rail bed might someday carry tourists within the nation's largest National Historic Landmark between Butte, the Mining City and Anaconda, the Smelter City on the route once-traveled by copper ore from the mines on its way to be smelted.



*An old electric train engine sits on the north side of the Discover Anaconda Visitors Center at the corner of Cherry Street and Park Avenue.*



*St. Peter's Catholic Church, which was built in 1898 at the corner of Alder and Fourth streets and is listed on the National Register of Historic Places, recently received a face lift, which included a new roof, repair of the exterior bricks, a paint job and restoration of the bell tower and steeple. The church was designed by Anaconda architect W. W. Hyslop in the Gothic Revival style and originally served the Croatian, Slovenian, and Montenegrin residents of Anaconda. Leader photo by James S. Rosien*

# Lost Creek State Park full of wildlife

Lost Creek State Park, just a few miles from Anaconda, offers some of the area's finest camping and picnicking opportunities.

The park features a short hike to Lost Creek Falls, where sparkling water cascades over a 50-foot drop in a sheer rock in a setting of evergreens, willows and aspens.

Lost Creek flows through a narrow 3,000-foot deep canyon, which is littered with giant boulders. Spectacular gray limestone cliffs and pink and white granite formations rise 1,200 feet about the canyon floor.

The 440-acre site became a park in 1957. The park, located on U.S. Forest Service land, but operated by the state, may be found by traveling east from Anaconda, turning left on Highway 48 and then almost immediately taking another left on Highway 273. After traveling two miles, take another left and then follow the road about five miles up into the park.

There are more than 40 picnic and campsites available on a first-come, first-served basis. Each campsite has a picnic table and fire grill and will accommodate one vehicle or a 25-foot recreational vehicle.

Drinking water, garbage cans and vault toilets are nearby. A toilet and one campsite with table, cement pad and fire grill are accessible to people with disabilities.

At the end of the road is a larger park area, rest rooms and a parking lot near the falls.

A short walk, about 125 yards up a paved trail, brings you to Lost Creek Falls, which cascades over a 50-foot drop. Above the falls a hiking trail takes you into the mountains.

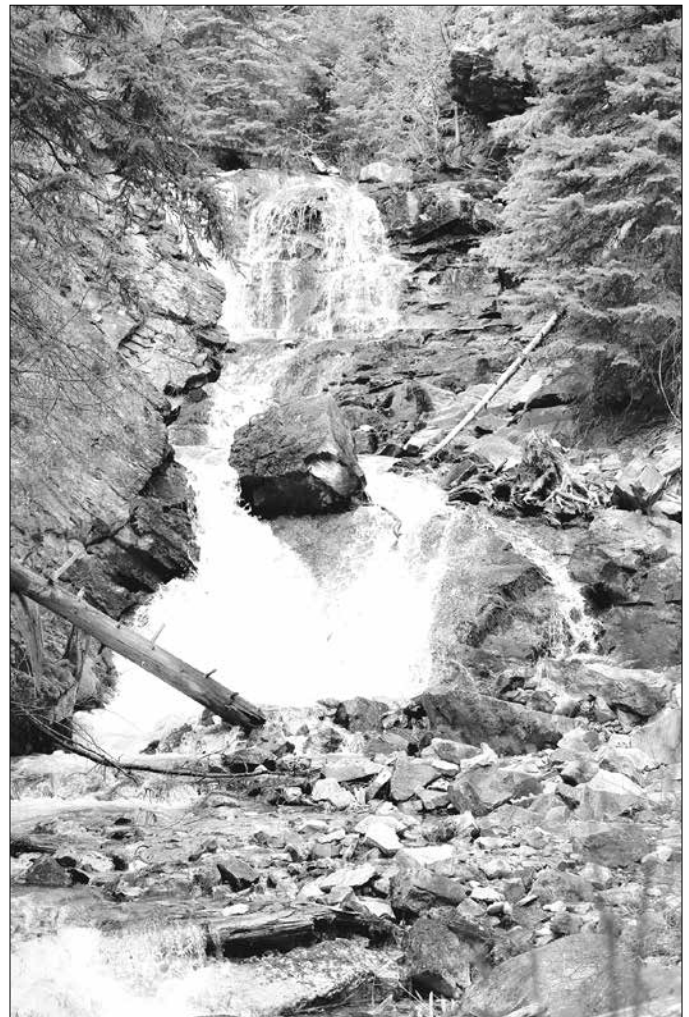
From the parking lot you can scan the rock cliffs, particularly if you have a pair of binoculars, for Rocky Mountain goats and bighorn sheep. The mountain goats are native to the area. The sheep were transplanted in the park in 1967.

The rock walls on the left or north side of the park are part of the Precambrian Newland Formation that was formed from compaction and hardening of lime-rich muds deposited in a shallow sea approximately 1.3 billion years ago.

A granite dike, formed when molten rock was forced into the fractures or cracks in the Newland Formation about 75 million years ago, can be seen angling up the wall. Both rock formations were probably eight miles beneath the surface of the earth at that time.

As the Rocky Mountains formed, the granite rocks were brought closer to the surface. About one million years ago a tongue of glacial ice moved down the valley of Lost Creek, cutting through the overlying rocks and into the granite rocks now exposed on the cliff.

A self-register system is in use at Lost Creek State Park. Special fees apply to groups larger than 30 people; for information, contact the Montana Department of Fish, Wildlife and Parks in Missoula, 406-542-5500.



Lost Creek Falls is quite a sight. Photo courtesy of Carly Moodry



# Spice Up Your Day



Serving  
**Breakfast**  
All Day!



Make It A  
**Combo**  
with Drink and  
Mexi Fries



Try Our  
• Chicken Fiesta Salad  
• Vegie Salad  
or  
• Tostada Delight

Try Our  
**Plate or Platter**  
Meals



**OPEN**  
7 a.m.  
7 days a week



Try Our  
**Taco Salads**



421 East Commercial • Anaconda • (406) 559-3277





*The Anaconda Ancient Order of Hibernians' annual St. Paddy's Day Race is a fun run/walk for people of all fitness levels. The race is held the Saturday before St. Patrick's Day. Leader photo by James S. Rosien*



# GENUINE. MONTANA. EXPERIENCE.

HOT SPRINGS LODGING DINING GOLF SPA



 **FAIRMONT**  
HOT SPRINGS RESORT

FairmontMontana.com | 406.797.3241





Silver Lake is about 12 miles west of Anaconda off Montana Highway 1, otherwise known as the Pintler Veterans Memorial Scenic Highway. Leader photo by Kathie R. Miller

**Wilcoxson's**

Now Serving

**Ice Cream**

**ICE CREAM**

Daily 2-8

201 East Park Anaconda, MT

(406) 563-8441



**LEADER DRUG STORE**

We Ship Anywhere

**Hours:**

**Mon-Friday 9:00-5:00**

## DID YOU KNOW

### Thrifty Drug offers Dispill™ Packaging?



Dispill™ is a patented, cold-sealed, multi-dose medication packaging system. Each Dispill™ pack is made up of individual blisters containing a person's prescribed medication for a specific time and date. Blister packs can be personalized according to each patient's prescribed medication.

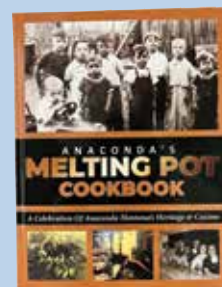
We can deliver your prescriptions weekly or monthly & will handle all your changes, making your home less cluttered with medications you no longer take.



*Call us for all your prescription needs. Professional Pharmacists always available to handle all your medical needs.*

### Check Out Our Great Gift Selection

- Local Artist Section
- Anaconda & Montana Souvenirs
- Anaconda Books • Huckleberry Products • Copper
- Montana Signs • Jewelry • & More!



Anaconda's Melting Pot Cookbooks on sale here!







Marigolds, mimicking molten copper, spill from a ladle once used at the Anaconda smelter converters. The flowers are a summer staple at Old Works Golf Course.

**A&A**  
**technical repair inc.**  
*Anaconda, Montana*

1417 Smelter Road  
Anaconda, Montana  
Auto Repair - (406) 563-5779  
24 hr. Towing - (406) 560-6723  
Family owned and operated

AAA  
Provider for Anaconda

ASE  
CERTIFIED

Propane Sales • Tires • Alignment  
Foreign & Domestic Auto Repair  
European Car Specialist • 24 Hour Towing

Website: [www.aat406.com](http://www.aat406.com)    [www.facebook.com/aandatech](http://www.facebook.com/aandatech)    John Atkerson, ASE Master Technician

# Mitchell Stadium grew out of Depression

The first football game in Mitchell Stadium, home of the Anaconda Copperheads, was played on Saturday evening, Sept. 16, 1939.

Coach Mike O'Leary and his squad took on the Butte Central Maroons before 7,000 fans and defeated Butte, 32-6.

The Copperheads held their first-ever night practice under the lights two days before their season-opening game against the Maroons, and that practice alone drew thousands of fans eager for the start of the season in a new facility.



Tickets for the game, the first of five during the season, were on sale at the clerk's desk at the Montana Hotel, as well as in Butte. Reserved season tickets sold for \$2.50 (50 cents a game) or individual tickets for each game were 75 cents.

Never before did Anaconda have the luxury of lights for a football game, and the new facility meant that smeltermen on the day shift would be able to watch their first football contest in the 41-year history of the game in Anaconda.

The stadium was named in honor of W.E. Mitchell, who was the general superintendent of the Anaconda Reduction Works and the designer of the stadium.

Mitchell Stadium covers four city blocks, and when first put in use it had seating for 4,480 fans in the concrete stands and seating for another 2,000 fans on portable bleachers near the north fence.

There were six lights apiece on each of the 10 light poles, consuming 90,000 watts of power.

A space roughly the size of two city blocks provided parking for 1,200 automobiles.

One of the many Works Progress Association projects in Anaconda, construction on the stadium began on July 6, 1938. The final cost was \$25,000.

In addition to the stadium itself, the soil beneath the turf is rich in history.

The soil base was once part of Marcus Daly's famous horse track.

The track and elaborate grandstand stood in the area of the new addition west of the Safeway store. Some 200 loads of the loam soil were moved from the racetrack to the stadium.

The stadium remains in use today, still home to the Anaconda Copperheads and their home games each fall. The stadium is the site of the annual Wayne Estes Invitational high school track meet. It is also used for numerous smaller events, including the annual Hershey track meet and Punt, Pass, Kick, and Run competition.

Mitchell Stadium is located on the 1100 block of West Fifth Street.

*Mitchell Stadium hosts junior and senior high school track meets each season. Leader photo by Paul Johns*



*The Discover Anaconda Visitors Center is at the corner of Cherry Street and East Park Ave. Call 406-563-2400.*

## *Discover Anaconda welcomes visitors*

The Discover Anaconda Visitors Center, housed in a replica of a railroad station, offers visitors information about local, regional and state attractions.

At 306 E. Park Ave., the building is easy to spot. Around back is one of the smelter's electric locomotives used to shunt ore cars in the once-busy East Anaconda Yards and on "the Hill."

Inside, the ambience of a depot is evident, from the ticket office in the corner to the postings of Butte, Anaconda and Pacific Railway (BA&P) Departures and Arrivals.

Large photos of Anaconda in its early days, as well as of the smelter (inside and out) line the walls of the Visitors Center. Replicas of patterns, used by the Foundry to make smelter machinery and equipment, help make a visit to the Visitors Center office a mini-tour of the city, with a museum-like presentation.

Visitors will find state maps, U.S. Forest Service maps, hiking maps and maps of nearby states for quick reference.

A slide presentation introduces you to Anaconda and Deer Lodge County. The Visitors Center has

two vintage touring bus tours scheduled at 10 a.m. and 2 p.m. Monday through Friday and one on Saturdays at 10 a.m. A knowledgeable driver and narrator take approximately 12-14 persons per tour to see highlights of the Smelter City.

For the hiker, or just plain walker, Discover Anaconda has booklets showing a walking tour of notable Anaconda buildings with connections to hiking tours. Guide books for the hiker or the rockhound are available, along with samples of the Treasure State's rocks.

Discover Anaconda – which was formed in 2021 after a merger of the Anaconda Chamber of Commerce and the Anaconda Local Development Corporation – offers not only an introduction to Anaconda-Deer Lodge County and southwestern Montana, but a wealth of information along with a warm "hello" and welcome to the area.

The Discover Anaconda Visitors Center, located at 306 E. Park Ave., is open 9 a.m. to 4 p.m. Monday through Friday and 9 a.m. to 2 p.m. Saturdays and Sundays. The phone number is 406-563-2400. Visit its website at [www.discoveranaconda.org](http://www.discoveranaconda.org).



# Art in the Park has something for everyone

There's something for everyone beneath the majestic trees at Art in the Park, which turns Washoe Park into an art festival rivaling any in the Northwest.

Copper Village hosts the annual event during the third weekend of July. So bring your blankets and lawn chairs and grab a spot on the lush green lawn to listen to a variety of music including blues, folk, rock, Celtic and country at the family-oriented event.

Stroll through the 75 juried art booths set along Warm Springs Creek. You'll find the works of Anaconda artists like Fred Boyer and Roger Wyant along side artists from across the country. The artwork includes everything from fine arts, paintings, photography, jewelry, sculptures, pottery, ceramics, glass, leather crafts and wood works.

Sample local cuisine including pork chop sandwiches, sarmas, barbecue beef, traveling tacos, Chinese food, smoked pork and baked potatoes with a variety of toppings.

Snacks include shaved ice, fried scones, donuts, pretzels, cotton candy and KettleKorn that can be washed down with beer, pop and fresh-squeezed lemonade.

For those with a sweet tooth, you'll find homemade pies, ice cream and fresh fruit.

Friday night includes a traditional barbecue meal of beef, baked beans, corn on the cob and salad beginning at 6 p.m. and continuing until the food runs out.

Copper Village Museum and Art Center has been holding the three-day event for more than 40 years. About 10,000 people attend each year. Tickets can be purchased at the gate or by calling 563-2422.



*There's live entertainment for three days at Art in the Park, which is held on the third weekend of July at Washoe Park. Leader photo by James S. Rosien*



*The Copper Village Woodcarvers are an Art in the Park staple. Leader photo by James S. Rosien*

# SUBWAY



Rocker, Montana  
782-0101

1420 East Park  
inside Thriftway Super Stops  
563-6570



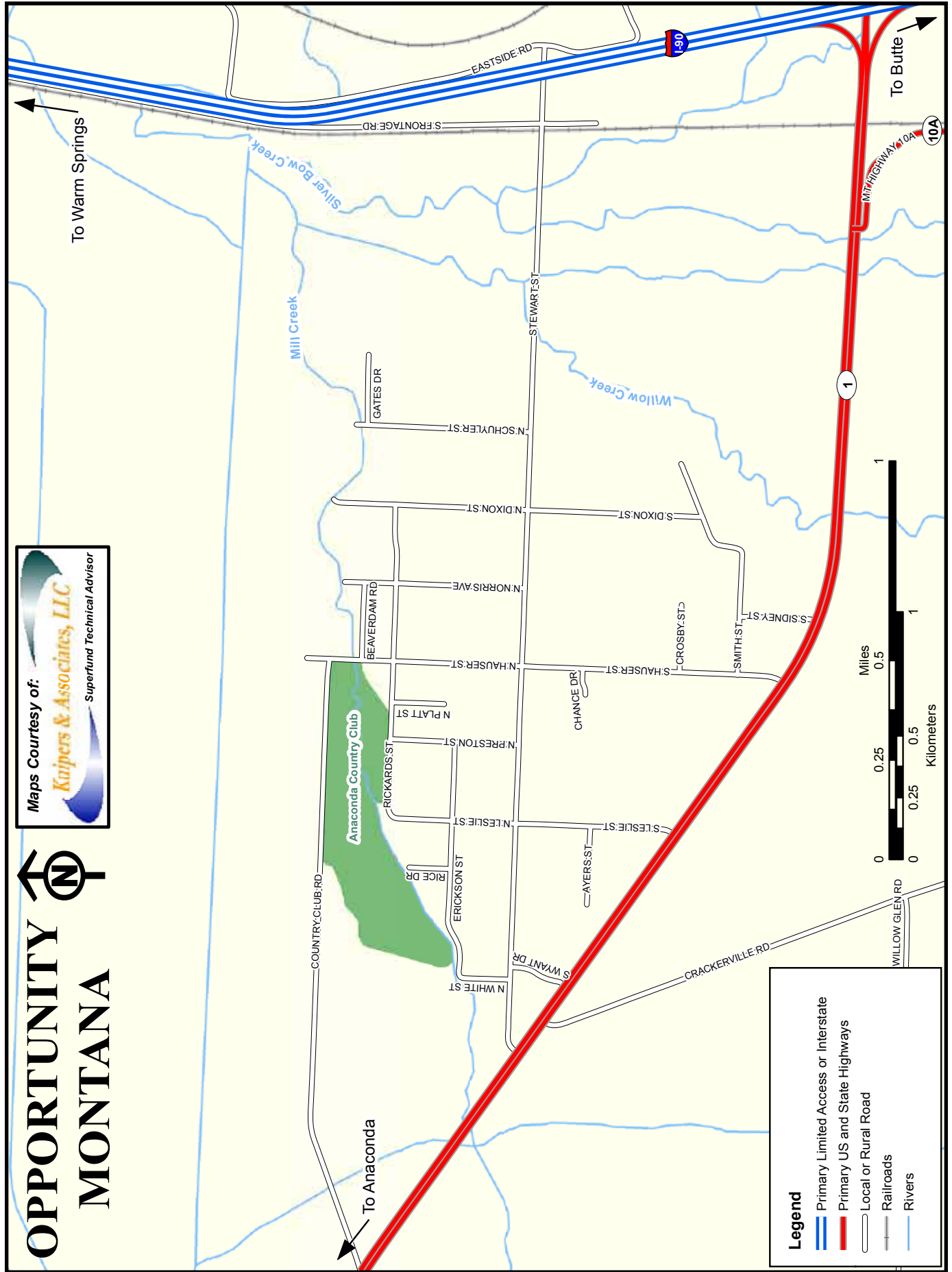
**HOURS**  
Open until 11 p.m.  
Mon. - Sat.



# OPPORTUNITY MONTANA

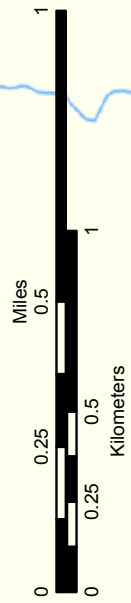


Maps Courtesy of:  
**Kuipers & Associates, LLC**  
Superfund Technical Advisor



**Legend**

- Primary Limited Access or Interstate
- Primary US and State Highways
- Local or Rural Road
- Railroads
- Rivers



To Warm Springs

To Anaconda

To Butte



# Metcalf Center is the center of senior life

The Metcalf Memorial Senior Citizens' Center at 115 E. Pennsylvania provides area seniors with a wide variety of social activities as well as services.

The Metcalf Senior Citizens Center was built on land donated by the Butte, Anaconda and Pacific Railway and a \$511,000 Economic Development grant.

It opened its doors on St. Patrick's Day in 1978 and had its formal dedication in honor of Montana Senator Lee Metcalf on June 25, 1978.

The Metcalf Center offers a variety of free daily activities at the center including pool, cards, Bingo, puzzles and Mexican Train Dominos. Pinochle is offered Tuesdays and Wednesdays from 1 p.m. to 4 p.m. and Bingo every first and third Thursday of the month.

It also occasionally offers presentations from members of the community and hosts activities for special events.

In addition, the Metcalf Center can loan



You'll always find a game of pool at the Metcalf Memorial Senior Citizens Center. Leader photo by James S. Rosien

durable medical equipment. It also has a commodity supplemental food program for seniors who qualify. Some services are offered on a monthly basis, so call the center for an appointment.

The Metcalf Center serves lunch in the dining room, which seats 200, at noon Monday through Friday, except for holidays. Through its Meals on Wheels program, the Metcalf Center also prepares and delivers meals to seniors who are unable to go to the center. There also is a van transportation service to and from the Metcalf Center for lunch and special events.



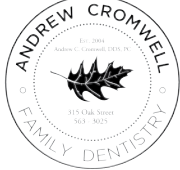
For more information, call the Metcalf Memorial Senior Citizens Center at 406-563-3504.

The Metcalf Memorial Senior Citizens Center at 115 E. Pennsylvania Ave. calls Bingo games after lunch twice a month. The center is open Mondays through Fridays from 8 a.m. to 4 p.m. Leader photo by James S. Rosien



**Andrew Cromwell, DDS**  
315 Oak Street • Anaconda  
563.3025

**Family Dentistry**

- Tooth Whitening
- Cleanings
- Fillings
- Root Canals
- Extractions
- Partials
- Dentures
- Digital X-Rays

Open Tues.-Fri.  
7 a.m. - Noon & 1-5 p.m.

www.acromwelldentist.com

**Connors Law Firm, PLLC**

**Kenneth A. Connors**

Dedicated to providing professional service to our Southwestern Montana Community



212 E Park Ave | Anaconda, MT | 563.5297

# Montana's longest zipline is in Anaconda

Montana Zipline Adventures is now open in Anaconda, with seven lines and over 9,300 feet of ziplining to enjoy, making it the longest zipline course in Montana.

Guests looking to zipline will have access to safety gear and harnesses upon check-in that are included in the booking price. Then, they will be driven up to their first tower.

There is a weight limit of at least 70 pounds and a maximum of 250 pounds. Guests have to weigh in and sign a waiver before going up. Children must be at least 7 years old and at least 70 pounds otherwise they won't make it onto the landing pad, which consists of pea gravel. Guests must wear close-toed shoes and long hair must be put up to prevent accidents. Two certified guides take groups through the course, which takes about three hours to complete. After you go through each line, you end up right back at the check-in point.

Riding the zipline is weather-dependent, so in the event of high winds or downpours guests won't be allowed to ride. Landing ramps and towers are accessible, with a total walking distance for the whole course at approximately half a mile. Guests should not be afraid of heights. People with heart or back problems and women who are pregnant are advised not to go up for their own safety.

Montana Zipline Adventures, located at 467 Swissmont Dr. off Cable Road on Anaconda's west side, is open seven days a week. Anyone interested in taking a zipline tour can contact them at 406-560-3115.



Montana Zipline Adventures has some spectacular views.

## ZIPLINE WITH US!

- 9300 FEET OF ZIPLINE
- 7 EXHILARATING COURSES
- 2.5 HOURS OF FUN!
- 1/2 MILE TOTAL HIKING



**MONTANA ZIPLINE ADVENTURES**  
ANACONDA, MT

RESERVE YOUR TOUR TODAY!

Bookings by reservation only

www.montanazip.com

BOOK NOW





SCAN ME

467 Swissmont Drive  
Anaconda, MT 59711  
406 560 3115  
hello@montanazip.com





# DISCOVER *Anaconda*

Center for Economic Development and Tourism

Join Us



Adventure  
with  
us







# Welcome to Anaconda



Ten-Time Recipient

- **Community Hospital of Anaconda** is a certified community trauma facility with board eligible emergency physicians on staff 24/7
- **Convenient Care** hours are offered daily from 7 a.m.-7 p.m., 7 days/week

## Community Nursing Home

615 Main St.  
(406) 563-8414



305 W. Pennsylvania  
(406) 563-7337



305 W. Pennsylvania  
(406) 563-8686  
(406) 563-7282

## Pintler Surgical Specialists

305 W. Pennsylvania  
(406) 563-8571

## Anaconda Internal Medicine

1102 East Commercial  
(406) 563-8647

## CHA Hematology/Oncology Clinic

305 W. Pennsylvania  
(406) 563-8606

## Pintler Home Options

118 East Seventh  
(406) 563-7023



**PINTLER**  
ORTHOPEDICS AND SPINE

305 W. Pennsylvania  
(406) 563-8554





# Golf The Best!

OLD COURSE  
FLAVOR  
NEW COURSE  
CHALLENGE



**Banquet Room**  
for weddings, reunions  
and family parties

Call  
**797-3220**  
for Tee Times

- Golf Cart Rental
- Pro Shop
- Snack Bar
- Lounge
- Driving Range
- Open to Public
- We Accept Green Fees - Tee Times

*photo by Rick Wagner*

**"HOME OF THE FRIENDLIEST 19<sup>TH</sup> HOLE IN THE STATE"**



**Anaconda  
Country Club**  
Mark Torney, PGA Golf Professional

Located at Opportunity, MT - 3 miles East of Anaconda  
(look for the red, white and blue signs on Highway 1)

